



REPUBLIC OF CROATIA - MINISTRY OF FINANCE

STATISTICAL REVIEW

MINISTRY OF FINANCE MONTHLY STATISTICAL REVIEW - NUMBER **228**

ZAGREB, SEPTEMBER 2014

IX/2014

COMPILED AND PUBLISHED BY: MINISTRY OF FINANCE, BUREAU FOR MACROECONOMIC AND FISCAL ANALYSIS AND PROJECTIONS

KATANČIĆEVA 5, 10000 ZAGREB, REPUBLIC OF CROATIA
TEL: (385) 1 4591267
FAX: (385) 1 4591393

Editor:

Bureau for Macroeconomic and Fiscal Analysis and Projections

**WHEN USING DATA FROM THIS PUBLICATION,
PLEASE CITE THE SOURCE**

Available on the Internet: www.mfin.hr

SYMBOLS

§ preliminary data

ISSN 1334-4013

CONTENTS

Table 1: Basic Macroeconomic Indicators for the Croatian Economy	3
Table 2: Budgetary Central Government Revenue	4
Table 3: Budgetary Central Government Expense	5
Table 4: Transactions in Nonfinancial Assets of Budgetary Central Government	6
Table 5: Transactions in Financial Assets of Budgetary Central Government	7
Table 6: Transactions in Liabilities of Budgetary Central Government	8
Table 7a: Transactions in Financial Assets and Liabilities, by Sectors	9
Table 8: Statement of Budgetary Central Government Operations	10
Table 8A/8B: Measures of Budgetary Central Government Deficit/Surplus	11
Table 9: Croatian Waters Transactions	12
Table 10: Fund for Environmental Protection and Energy Efficiency Transactions	13
Table 11: Croatian Motorways Ltd. Transactions	14
Table 12: Croatian Roads Ltd. Transactions	15
Table 13: State Agency for Deposit Insurance and Banks Rehabilitation Transactions	16
Table 14: Croatian Privatization Fund Transactions	17
Table 15: Agency for Management of the Public Property	18
Table 16: Restructuring and Sale Center	19
Table 17: Consolidated Central Government by Economic Category	20
Table 18: Consolidated Central Government According to Government Level	21
Table 18A/18B: Measures of Consolidated Central Government Deficit/Surplus	22
Table 19: Local Government Transactions (the largest 53 units)	23
Table 20: Consolidated General Government by Economic Category	24
Table 21: Consolidated General Government According to Government Level	25
Table 23: Consolidated Central Government Domestic Debt	26
Table 24: Results of Treasury Bill's Auctions held by the Ministry of Finance	27
Treasury Bills	28
Notes on Methodology	29
Management of the Ministry of Finance	35
Advance Release Calendar	36

TABLE 1: BASIC MACROECONOMIC INDICATORS FOR THE CROATIAN ECONOMY

	2008	2009	2010	2011	2012	2013	2013	2014			2014							
							Q4	Q1	Q2	Q3	III	IV	V	VI	VII	VIII	IX	
GDP, current prices (mil. HRK)	347,685	330,966	328,041	332,587	330,456	330,135	81,896	75,116	81,982	-	-	-	-	-	-	-	-	-
GDP, real growth rate as %	2.1	-7.4	-1.7	-0.3	-2.2	-0.9	-1.1	-0.6	-0.8	-	-	-	-	-	-	-	-	-
Industrial production volume index (working-day adjusted indices), growth rate as %	-	-	-1.5	-1.2	-5.6	-2.0	-2.3	1.5	0.1	0.2	0.7	0.6	1.2	-1.7	1.4	-4.7	3.8	-
Retail sales turnover (working-day adjusted indices), real growth rate as %	-0.9	-11.3	-2.6	1.0	-4.3	-0.4	-0.3	0.5	-0.6	-0.1	1.2	0.3	-1.8	0.1	-1.9	0.3	1.4	-
Construction work index (working-day adjusted indices), growth rate as %	11.9	-6.8	-15.8	-8.7	-9.7	-4.6	-5.3	-6.7	-7.3	-	-6.7	-6.0	-6.0	-5.8	-8.0	-2.7	-	-
Number of tourist nights, growth rate as %	2.0	-1.4	2.6	7.0	4.0	3.3	8.0	-6.5	5.9	1.9	-18.4	18.6	-13.1	12.8	-2.1	5.3	2.0	-
Industrial producer price index, period average, growth rate as %	8.3	-0.4	4.3	6.3	7.0	0.5	-2.7	-2.7	-2.7	-2.9	-3.1	-3.0	-2.4	-2.9	-2.4	-3.2	-3.2	-
Consumer price index, period average, growth rate as %	6.1	2.4	1.1	2.3	3.4	2.2	0.3	-0.3	-0.3	-0.2	-0.4	-0.5	-0.2	-0.4	-0.1	-0.3	-0.2	-
Total persons in employment, period average	1,554,805	1,498,784	1,432,454	1,411,238	1,395,111	1,364,298	1,342,588	1,312,719	1,343,894	1,360,874	1,313,086	1,327,351	1,342,822	1,361,510	1,370,291	1,364,599	1,347,732	-
Registered unemployed persons, period average	236,741	263,174	302,425	305,333	324,323	345,112	354,906	379,842	328,961	292,189	376,866	354,449	327,508	304,925	296,094	289,889	290,584	-
Registered unemployment rate, period average, %	13.2	14.9	17.4	17.8	18.9	20.2	20.9	22.4	19.7	17.7	22.3	21.1	19.6	18.3	17.8	17.5	17.7	-
ILO unemployment rate, period average, %	8.4	9.1	11.8	13.5	15.8	17.3	17.6	18.7	16.6	-	-	-	-	-	-	-	-	-
Average monthly gross earning, in HRK	7,544	7,711	7,679	7,796	7,875	7,939	7,979	7,922	7,957	7,908	7,949	7,919	7,927	8,024	7,967	7,938	7,820	-
Average monthly gross earning, growth rate as %	7.1	2.2	-0.4	1.5	1.0	0.8	0.3	-0.2	0.1	0.3	-0.5	0.4	-1.7	1.6	0.6	0.1	0.3	-
Exchange rate HRK/EUR, period average	7.22	7.34	7.29	7.43	7.52	7.57	7.63	7.65	7.60	7.61	7.65	7.63	7.59	7.57	7.60	7.63	7.62	-
Exchange rate HRK/USD, period average	4.93	5.28	5.50	5.34	5.85	5.71	5.60	5.58	5.54	5.74	5.54	5.52	5.52	5.57	5.61	5.72	5.89	-
Trade Balance (mil. EUR)	-11,232	-7,691	-6,232	-6,699	-6,586	-6,938	-1,463	-1,626	-1,942	-	-617	-719	-595	-628	-638	-522	-	-
Exports (mil. EUR)	9,585	7,529	8,905	9,582	9,629	9,589	2,623	2,355	2,553	-	830	829	864	859	972	770	-	-
Imports (mil. EUR)	20,817	15,220	15,137	16,281	16,214	16,528	4,086	3,981	4,494	-	1,447	1,548	1,459	1,487	1,610	1,292	-	-
Current account balance (mil. EUR)	-4,245	-2,304	-503	-380	-42	378	-816	-1,507	-310	-	-	-	-	-	-	-	-	-
Current account balance (as % of GDP)	-8.8	-5.1	-1.1	-0.8	-0.1	0.9	0.9	0.6	0.5	-	-	-	-	-	-	-	-	-
International reserves of CNB, end of period (mil. EUR)	9,121	10,376	10,660	11,195	11,236	12,908	12,908	12,100	12,335	12,116	12,100	11,680	13,017	12,335	12,388	12,420	12,116	-
External debt, end of period (mil. EUR)	40,590	45,600	46,908	46,397	45,276	45,920	45,920	46,713	46,267	-	46,713	45,699	46,932	46,267	45,872	-	-	-
Internal debt of Consolidated Central Government, end of period (mil. HRK)	62,126	72,261	84,361	90,340	103,254	113,676	113,676	117,103	116,858	111,871	117,103	117,117	117,147	116,858	117,336	117,225	111,871	-
Credit institutions' loans, growth rate as %	14.5	2.2	7.2	6.0	-2.4	0.9	0.9	-0.3	-2.3	-	-0.3	-1.3	-1.2	-2.3	-2.3	-3.1	-	-
Interest rate on treasury bills of 91 days maturity, end of period, %	6.00	4.70	2.30	4.55	1.25	0.75	0.75	0.60	0.60	0.40	0.60	0.55	-	0.60	-	0.40	0.40	-
ZIBOR (3 m), period average, %	7.20	8.96	2.43	3.15	3.43	1.51	1.38	0.90	0.86	1.01	0.86	0.83	0.87	0.89	0.87	1.01	1.16	-

Source: Croatian Bureau of Statistics, Croatian National Bank, Ministry of Finance

TABLE 3: BUDGETARY CENTRAL GOVERNMENT EXPENSE

	(000 HRK)	2011	2012	2013	VII - IX 2013	X - XII 2013	2014 Plan	I - III 2014	IV - VI 2014	VII - IX 2014	I - IX 2014	IX 2014	I - IX 2014 2014 Plan
2	EXPENSE (21+22+24+25+26+27+28)	119,939,511	118,729,992	123,505,883	29,351,360	30,953,742	128,085,807	31,942,910	31,221,479	29,666,759	92,831,148	9,936,135	72.5
21	Compensation of employees (211+212)	31,737,350	31,383,210	30,461,818	7,561,158	7,553,996	30,094,678	7,547,378	7,488,319	7,514,506	22,550,203	2,512,975	74.9
211	Wages and salaries	26,932,391	26,910,038	26,286,011	6,520,939	6,527,194	25,775,528	6,522,525	6,391,758	6,377,367	19,291,649	2,134,388	74.8
212	Social contributions	4,804,959	4,473,172	4,175,807	1,040,219	1,026,802	4,319,150	1,024,854	1,096,561	1,137,139	3,258,554	378,587	75.4
22	Use of goods and services	7,943,604	7,406,320	7,537,416	1,676,142	2,426,313	7,618,314	1,509,023	1,689,776	1,584,059	4,782,858	490,937	62.8
24	Interest (241+242+243)	7,097,592	8,335,656	9,259,196	3,168,326	1,606,097	10,801,074	3,022,396	1,939,972	3,176,863	8,139,231	1,226,657	75.4
241	To nonresidents	2,491,668	3,123,476	3,755,471	923,233	890,655	4,507,573	978,484	1,191,165	1,318,503	3,488,151	349,442	77.4
242	To residents other than general government	4,605,924	5,212,180	5,503,725	2,245,093	715,442	6,293,501	2,043,912	748,807	1,858,360	4,651,080	877,215	73.9
25	Subsidies (251+252)	6,555,277	5,762,321	5,537,845	777,568	1,007,966	5,627,889	1,910,165	1,805,764	704,995	4,420,924	254,392	78.6
251	To public corporations	3,063,739	2,216,271	2,002,133	276,608	240,945	1,173,132	320,491	293,936	208,799	823,227	77,507	70.2
252	To private enterprises	3,491,538	3,546,050	3,535,712	500,960	767,020	4,454,757	1,589,673	1,511,828	496,196	3,597,697	176,885	80.8
26	Grants (261+262+263)	5,083,665	4,843,769	6,511,699	1,945,126	2,121,721	8,191,239	2,647,313	1,994,672	1,724,103	6,366,088	557,797	77.7
261	To foreign governments (2611+2612)	39,806	25,615	9,436	3,483	2,064	15,150	1,994	2,324	408	4,726	52	31.2
2611	Current	34,346	21,078	4,111	1,299	138	4,500	428	2,324	356	3,108	0	69.1
2612	Capital	5,459	4,537	5,326	2,184	1,925	10,650	1,566	0	52	1,618	52	15.2
262	To international organizations (2621+2622)	212,234	247,448	2,056,525	841,452	1,024,971	3,730,926	1,444,379	905,771	533,135	2,883,285	131,335	77.3
2621	Current	212,234	247,448	2,056,525	841,452	1,024,971	3,730,926	1,444,379	905,771	533,135	2,883,285	131,335	77.3
2622	Capital	0	0	0	0	0	0	0	0	0	0	0	
263	To other general government units (2631+2632)	4,831,625	4,570,706	4,445,737	1,100,191	1,094,687	4,445,164	1,200,940	1,086,577	1,190,560	3,478,077	426,410	78.2
2631	Current	2,468,917	2,440,511	2,362,235	515,733	512,485	1,868,964	693,000	570,662	524,486	1,788,148	171,595	95.7
2632	Capital	2,362,708	2,130,195	2,083,502	584,458	582,202	2,576,200	507,940	515,916	666,074	1,689,929	254,815	65.6
27	Social benefits (271+272+273)	56,482,968	56,169,850	58,943,356	12,848,804	14,840,246	58,953,557	13,956,230	15,003,180	13,740,365	42,699,775	4,569,374	72.4
271	Social security benefits	42,752,824	42,797,897	45,411,600	9,439,612	11,450,349	45,591,247	10,651,707	11,703,676	10,318,397	32,673,780	3,411,986	71.7
272	Social assistance benefits	13,602,326	13,240,668	13,392,974	3,369,696	3,355,432	13,292,493	3,268,339	3,238,364	3,373,958	9,880,661	1,134,926	74.3
273	Employer social benefits	127,817	131,285	138,782	39,496	34,464	69,817	36,185	61,140	48,009	145,334	22,462	208.2
28	Other expense (281+282)	5,039,054	4,828,865	5,254,553	1,374,237	1,397,403	6,799,056	1,350,405	1,299,796	1,221,868	3,872,069	324,003	57.0
281	Property expense other than interest	12	66	340	-18	243	86	20	2	5	26	1	30.1
282	Miscellaneous other expense (2821+2822)	5,039,042	4,828,799	5,254,213	1,374,255	1,397,159	6,798,969	1,350,386	1,299,794	1,221,863	3,872,043	324,002	57.0
2821	Current	2,018,297	2,068,407	2,316,424	535,634	572,779	3,116,294	507,635	957,359	590,066	2,055,060	222,906	65.9
2822	Capital	3,020,745	2,760,392	2,937,789	838,621	824,381	3,682,675	842,751	342,435	631,798	1,816,983	101,096	49.3

Source: Ministry of Finance

TABLE 4: TRANSACTIONS IN NONFINANCIAL ASSETS OF BUDGETARY CENTRAL GOVERNMENT

	(000 HRK)	2011	2012	2013	VII - IX 2013	X - XII 2013	2014 Plan	I - III 2014	IV - VI 2014	VII - IX 2014	I - IX 2014	IX 2014	I - IX 2014 2014 Plan
31	NET ACQUISITION OF NONFINANCIAL ASSETS (311+312+313+314)	1,138,970	829,626	1,304,518	165,150	736,924	2,250,171	289,592	112,339	183,749	585,680	50,043	26.0
31,1	Acquisition of nonfinancial assets (311,1+312,1+313,1+314,1)	1,485,978	1,107,982	1,564,011	228,156	805,354	2,565,691	414,956	290,441	291,422	996,819	92,652	38.9
31,2	Disposal of nonfinancial assets (311,2+312,2+313,2+314,2)	347,008	278,356	259,494	63,006	68,430	315,520	125,364	178,102	107,673	411,139	42,609	130.3
311	Fixed assets (3111+3112+3113)	1,118,710	772,151	1,036,609	154,763	496,263	1,973,787	151,838	187,859	182,649	522,346	54,771	26.5
311,1	Acquisitions: fixed assets (3111,1+3112,1+3113,1)	1,420,148	1,028,403	1,278,649	214,005	559,660	2,215,797	219,507	255,624	251,533	726,663	79,728	32.8
311,2	Disposals: fixed assets (3111,2+3112,2+3113,2)	301,438	256,251	242,040	59,242	63,398	242,010	67,668	67,765	68,884	204,317	24,957	84.4
3111	Buildings and structures (3111,1-3111,2)	484,370	265,596	381,100	43,838	145,335	709,215	15,111	26,326	35,996	77,433	9,027	10.9
3111,1	Acquisitions: buildings and structures	783,289	514,471	620,335	102,934	207,340	949,215	82,589	93,159	103,663	279,410	33,623	29.4
3111,2	Disposals: buildings and structures	298,919	248,875	239,235	59,097	62,006	240,000	67,477	66,833	67,667	201,977	24,596	84.2
3112	Machinery and equipment (3112,1-3112,2)	594,015	433,550	610,369	101,615	318,263	1,155,362	128,618	156,684	139,816	425,118	44,657	36.8
3112,1	Acquisitions: machinery and equipment	596,534	440,927	613,172	101,760	319,655	1,157,372	128,809	157,616	141,033	427,458	45,018	36.9
3112,2	Disposals: machinery and equipment	2,519	7,376	2,803	146	1,392	2,010	191	932	1,217	2,340	361	116.4
3113	Other fixed assets (3113,1-3113,2)	40,325	73,005	45,140	9,311	32,665	109,210	8,109	4,849	6,838	19,795	1,087	18.1
3113,1	Acquisitions: other fixed assets	40,325	73,005	45,142	9,311	32,665	109,210	8,109	4,849	6,838	19,795	1,087	18.1
3113,2	Disposals: other fixed assets	0	0	2	0	0	0	0	0	0	0	0	
312	Inventories	2,473	29,280	225,477	5,482	219,329	122,563	104,467	-104,358	-24,948	-24,839	-12,149	
312,1	Acquisitions: inventories	3,237	33,475	226,012	5,457	219,465	174,073	151,999	1,755	7,390	161,144	4,385	92.6
312,2	Disposals: inventories	764	4,195	536	-25	136	51,510	47,532	106,113	32,338	185,983	16,534	
313	Valuables (313,1-313,2)	3,741	3,494	1,333	987	336	3,111	4	6	2	11	1	
313,1	Acquisitions: valuables	3,741	3,494	1,333	987	336	3,111	4	6	2	11	1	
313,2	Disposals: valuables	0	0	0	0	0	0	0	0	0	0	0	
314	Nonproduced assets (314,1-314,2-314,3-314,4)	14,046	24,700	41,099	3,918	20,996	150,710	33,283	28,833	26,046	88,162	7,420	58.5
314,1	Acquisitions: nonproduced assets (3141,1+3142,1+3143,1+3144,1)	58,852	42,610	58,018	7,706	25,893	172,710	43,446	33,058	32,498	109,001	8,538	63.1
314,2	Disposals: nonproduced assets (3141,2+3142,2+3143,2+3144,2)	44,806	17,910	16,918	3,788	4,897	22,000	10,163	4,225	6,451	20,839	1,118	94.7
3141	Land (3141,1-3141,2)	-42,728	-17,166	-16,095	-3,686	-4,275	-6,482	-10,099	-4,206	-6,332	-20,637	-1,003	
3141,1	Acquisitions: land	1,988	744	823	102	622	15,518	64	19	119	202	115	1.3
3141,2	Disposals: land	44,716	17,910	16,918	3,788	4,897	22,000	10,163	4,225	6,451	20,839	1,118	94.7
3142	Subsoil assets	-90	0	0	0	0	0	0	0	0	0	0	
3142,1	Acquisitions: subsoil assets	0	0	0	0	0	0	0	0	0	0	0	
3142,2	Disposals: subsoil assets	90	0	0	0	0	0	0	0	0	0	0	
3143	Other naturally occurring assets	0	0	0	0	0	0	0	0	0	0	0	
3144	Intangible nonproduced assets (3144,1-3144,2)	56,864	41,866	57,194	7,604	25,272	157,192	43,382	33,039	32,379	108,799	8,423	69.2
3144,1	Acquisitions: intangible nonproduced assets	56,864	41,866	57,194	7,604	25,272	157,192	43,382	33,039	32,379	108,799	8,423	69.2
3144,2	Disposals: intangible nonproduced assets	0	0	0	0	0	0	0	0	0	0	0	

Source: Ministry of Finance

TABLE 5: TRANSACTIONS IN FINANCIAL ASSETS OF BUDGETARY CENTRAL GOVERNMENT

	(000 HRK)	2011	2012	2013	VII - IX 2013	X - XII 2013	2014 Plan	I - III 2014	IV - VI 2014	VII - IX 2014	I - IX 2014	IX 2014
32	NET ACQUISITION OF FINANCIAL ASSETS (321+322+323)	-618,448	-461,514	14,214,400	601,023	9,547,633	-2,635,238	-5,546,910	3,016,649	-4,000,347	-6,530,608	-4,882,179
32,1	Acquisition of financial assets (321,1+322,1)	2,398,899	1,515,781	9,686,493	366,567	8,607,982	2,991,056	654,108	2,285,805	1,253,962	4,193,875	51,447
32,2	Disposals of financial assets (321,2+322,2)	818,477	768,732	297,971	24,689	158,279	2,080,500	7,696,245	1,089,098	2,821,307	11,606,650	2,495,303
	Currency and deposits (3212+3222)	-2,198,870	-1,208,562	4,825,878	259,145	1,097,929	-3,545,794	1,495,227	1,819,942	-2,433,001	882,167	-2,438,323
321	Domestic (3212+3213+3214+3215+3216+3217+3218)	-623,788	-468,017	14,009,154	600,708	9,343,695	-2,846,251	-5,547,837	3,016,649	-4,000,347	-6,531,535	-4,882,179
321,1	Acquisition of domestic financial assets (3213,1+...+3218,1)	2,391,765	1,507,452	9,479,530	365,609	8,402,970	2,780,043	653,182	2,285,805	1,253,961	4,192,948	51,447
321,2	Disposals of domestic financial assets (3213,2+...+3218,2)	816,684	766,907	296,253	24,047	157,204	2,080,500	7,696,245	1,089,098	2,821,307	11,606,650	2,495,303
3212	Currency and deposits	-2,198,870	-1,208,562	4,825,878	259,145	1,097,929	-3,545,794	1,495,227	1,819,942	-2,433,001	882,167	-2,438,323
3213	Securities other than shares (3213,1-3213,2)	0	0	0	0	0	0	0	0	0	0	0
3213,1	Acquisition: Securities other than shares	0	0	0	0	0	0	0	0	0	0	0
3213,2	Disposals: Securities other than shares	0	0	0	0	0	0	0	0	0	0	0
3214	Loans (3214,1-3214,2)	1,024,421	92,382	8,558,231	271,741	7,990,643	1,662,043	-7,103,098	1,786,686	-1,572,441	-6,888,853	-2,445,960
3214,1	Acquisition: Loans	1,841,105	857,099	8,809,020	295,609	8,102,847	1,742,543	592,892	1,970,678	1,248,865	3,812,435	49,342
3214,2	Disposals: Loans	816,684	764,717	250,789	23,868	112,204	80,500	7,695,990	183,992	2,821,306	10,701,288	2,495,302
3215	Shares and other equity (3215,1-3215,2)	550,660	648,163	625,046	69,821	255,123	-962,500	60,034	-589,979	5,096	-524,849	2,104
3215,1	Acquisition: Shares and other equity	550,660	650,353	670,510	70,000	300,123	1,037,500	60,290	315,127	5,096	380,513	2,105
3215,2	Disposals: Shares and other equity	0	2,190	45,464	179	45,000	2,000,000	255	905,106	0	905,362	1
322	Foreign (3222+3223+3224+3225+3226+3227+3228)	5,341	6,503	205,245	315	203,938	211,013	927	0	0	927	0
322,1	Acquisition of foreign financial assets (3223,1+...+3228,1)	7,134	8,329	206,963	958	205,013	211,013	927	0	0	927	0
322,2	Disposals of foreign financial assets (3223,2+...+3228,2)	1,793	1,826	1,717	643	1,075	0	0	0	0	0	0
3222	Currency and deposits	0	0	0	0	0	0	0	0	0	0	0
3224	Loans (3224,1-3224,2)	0	0	315	315	0	0	0	0	0	0	0
3224,1	Acquisition: Loans	1,793	1,826	2,033	958	1,075	0	0	0	0	0	0
3224,2	Disposals: Loans	1,793	1,826	1,717	643	1,075	0	0	0	0	0	0
3225	Shares and other equity (3225,1-3225,2)	5,341	6,503	204,930	0	203,938	211,013	927	0	0	927	0
3225,1	Acquisition: Shares and other equity	5,341	6,503	204,930	0	203,938	211,013	927	0	0	927	0
3225,2	Disposals: Shares and other equity	0	0	0	0	0	0	0	0	0	0	0
323	Monetary gold and SDRs	0	0	0	0	0	0	0	0	0	0	0

Source: Ministry of Finance

TABLE 6: TRANSACTIONS IN LIABILITIES OF BUDGETARY CENTRAL GOVERNMENT

	(000 HRK)	2011	2012	2013	VII - IX 2013	X - XII 2013	2014 Plan	I - III 2014	IV - VI 2014	VII - IX 2014	I - IX 2014	IX 2014
33	NET INCURRENCE OF LIABILITIES (331+332)	13,390,363	9,539,175	30,439,751	2,552,691	12,389,030	10,951,778	1,694,655	3,728,045	-4,149,205	1,273,495	-5,420,104
33,1	Repayments (331,1+332,1)	11,320,894	11,059,657	12,104,801	5,242,052	922,004	22,570,251	9,305,375	6,701,676	4,939,466	20,946,517	4,685,239
33,2	Incurrences (331,2+332,2)	24,711,257	20,598,833	42,544,552	7,794,743	13,311,034	33,522,029	11,000,030	10,429,721	790,261	22,220,012	-734,865
	Currency and deposits (3312+3322)	0	0	0	0	0	0	0	0	0	0	0
331	Domestic (3312+3313+3314+3316+3317+3318)	4,793,136	1,413,994	8,904,914	2,528,989	925,630	4,926,635	3,331,319	-1,112,984	-5,525,180	-3,306,845	-5,377,911
331,1	Domestic repayments (3313,1+3314,1+3315,1+3316,1+3317,1+3318,1)	3,124,139	9,759,469	10,985,488	5,061,478	475,636	17,128,928	7,612,023	2,013,930	4,812,752	14,438,705	4,621,022
331,2	Domestic incurrences (3313,2+3314,2+3315,2+3316,2+3317,2+3318,2)	7,917,275	11,173,464	19,890,402	7,590,467	1,401,266	22,055,563	10,943,342	900,946	-712,428	11,131,860	-756,889
3312	Currency and deposits	0	0	0	0	0	0	0	0	0	0	0
3313	Securities other than shares (3313,2-3313,1)	3,023,835	6,035,183	7,357,785	2,462,179	1,410,135	8,815,499	4,695,973	491,629	-320,066	4,867,536	-382,663
3313,1	Repayments: Securities other than shares	2,689,441	3,902,510	4,000,000	4,000,000	0	4,971,949	4,971,949	0	0	4,971,949	-1
3313,2	Incurrences: Securities other than shares	5,713,276	9,937,693	11,357,785	6,462,179	1,410,135	13,787,448	9,667,922	491,629	-320,067	9,839,485	-382,664
3314	Loans (3314,2-3314,1)	1,769,302	-4,621,189	1,547,129	66,809	-484,504	-3,888,864	-1,364,654	-1,604,613	-5,205,114	-8,174,381	-4,995,248
3314,1	Repayments: Loans	434,698	5,856,959	6,985,488	1,061,478	475,636	12,156,979	2,640,074	2,013,930	4,812,752	9,466,756	4,621,023
3314,2	Incurrences: Loans	2,203,999	1,235,770	8,532,617	1,128,288	-8,868	8,268,115	1,275,420	409,317	-392,362	1,292,375	-374,225
332	Foreign (3322+3323+3324+3326+3327+3328)	8,597,227	8,125,181	21,534,837	23,702	11,463,400	6,025,143	-1,636,665	4,841,029	1,375,975	4,580,340	-42,193
332,1	Foreign repayments (3323,1+3324,1+3325,1+3326,1+3327,1+3328,1)	8,196,755	1,300,188	1,119,313	180,574	446,368	5,441,323	1,693,352	4,687,746	126,714	6,507,812	64,217
332,2	Foreign incurrences (3323,2+3324,2+3325,2+3326,2+3327,2+3328,2)	16,793,982	9,425,369	22,654,150	204,276	11,909,767	11,466,467	56,688	9,528,775	1,502,690	11,088,152	22,024
3322	Currency and deposits	0	0	0	0	0	0	0	0	0	0	0
3323	Securities other than shares (3323,2-3323,1)	7,786,583	8,548,785	18,783,420	0	9,902,025	3,835,000	0	5,664,765	0	5,664,765	0
3323,1	Repayments: Securities other than shares	5,541,105	0	0	0	0	3,815,000	0	3,823,660	0	3,823,660	0
3323,2	Incurrences: Securities other than shares	13,327,688	8,548,785	18,783,420	0	9,902,025	7,650,000	0	9,488,425	0	9,488,425	0
3324	Loans (3324,2-3324,1)	810,644	-423,604	2,751,417	23,702	1,561,375	2,190,143	-1,636,665	-823,736	1,375,975	-1,084,425	-42,193
3324,1	Repayments: Loans	2,655,650	1,300,188	1,119,313	180,574	446,368	1,626,323	1,693,352	864,086	126,714	2,684,152	64,217
3324,2	Incurrences: Loans	3,466,295	876,584	3,870,730	204,276	2,007,742	3,816,467	56,688	40,350	1,502,690	1,599,727	22,024

Source: Ministry of Finance

TABLE 7: TRANSACTIONS IN FINANCIAL ASSETS AND LIABILITIES, BY SECTORS

	(000 HRK)	I - IX 2014				
		Budgetary Central Government	Extrabudgetary Users	Consolidated Central Government	Local Government	Consolidated General Government
82 (=32)	NET ACQUISITION OF FINANCIAL ASSETS	-6,530,608	1,057,244	-5,824,600	501,185	-5,338,458
	Acquisition of financial assets	6,619,930	1,250,955	7,488,299	540,991	8,014,131
	Disposals of financial assets	13,150,538	193,711	13,312,899	39,806	13,352,589
821 (=321)	Domestic	-6,531,535	1,057,244	-5,825,527	501,185	-5,339,385
	Acquisition of domestic financial assets	6,619,003	1,250,955	7,487,372	540,991	8,013,204
	Disposals of domestic financial assets	13,150,538	193,711	13,312,899	39,806	13,352,589
8211	General government	357,483	-469	5,778	-112	-9,377
	Acquisitions: General Government	404,496	0	21,910	0	6,751
	Disposals: General Government	47,013	469	16,132	112	16,128
8212	Central bank	1,041,849	0	1,041,849	0	1,041,849
	Acquisitions: Central bank	2,563,730	0	2,563,730	0	2,563,730
	Disposals: Central bank	1,521,881	0	1,521,881	0	1,521,881
8213	Other depository institutions	-7,408,469	821,122	-6,587,347	446,253	-6,141,094
	Acquisitions: Other depository institutions	242,838	970,786	1,213,624	451,856	1,665,480
	Disposals: Other depository institutions	7,651,307	149,664	7,800,971	5,603	7,806,574
8215	Nonfinancial institutions	-609,891	236,591	-373,300	54,397	-318,903
	Acquisitions: Nonfinancial institutions	3,268,998	280,169	3,549,167	83,626	3,632,793
	Disposals: Nonfinancial institutions	3,878,889	43,578	3,922,467	29,229	3,951,696
8216	Households and nonprofit institutions serving households	87,493	0	87,493	647	88,140
	Acquisitions: Hholds and nonprofit institutions serving hholds	138,941	0	138,941	5,509	144,450
	Disposals: Hholds and nonprofit institutions serving hholds	51,448	0	51,448	4,862	56,310
822 (=322)	Foreign	927	0	927	0	927
	Acquisition of foreign financial assets	927	0	927	0	927
	Disposals of foreign financial assets	0	0	0	0	0
8227	International organizations	927	0	927	0	927
	Acquisitions: International organizations	927	0	927	0	927
	Disposals: International organizations	0	0	0	0	0
8229	Other nonresidents	0	0	0	0	0
	Acquisitions: Other nonresidents	0	0	0	0	0
	Disposals: Other nonresidents	0	0	0	0	0
83 (=33)	NET INCURRENCE OF LIABILITIES	1,273,495	945,508	1,867,767	-353,074	1,499,650
	Repayments: liabilities	20,946,517	1,234,099	22,149,266	474,024	22,623,174
	Incurrences: liabilities	22,220,012	2,179,607	24,017,033	120,950	24,122,824
831 (=331)	Domestic	-3,306,845	942,297	-2,715,784	-350,272	-3,081,099
	Repayments: domestic liabilities	14,438,705	1,160,837	15,568,192	471,222	16,039,298
	Incurrences: domestic liabilities	11,131,860	2,103,134	12,852,408	120,950	12,958,199
8311	General government	0	351,236	0	14,407	-636
	Repayments: General Government	0	31,350	0	752	636
	Incurrences: General Government	0	382,586	0	15,159	0
8313	Other depository institutions	-3,306,845	591,061	-2,715,784	-353,023	-3,068,807
	Repayments: Other depository institutions	14,438,705	1,129,487	15,568,192	455,414	16,023,606
	Incurrences: Other depository institutions	11,131,860	1,720,548	12,852,408	102,391	12,954,799
8314	Financial institutions not elsewhere classified	0	0	0	0	0
	Repayments: Financial institutions not elsewhere classified	0	0	0	0	0
	Incurrences: Financial institutions not elsewhere classified	0	0	0	0	0
8315	Nonfinancial institutions	0	0	0	-11,656	-11,656
	Repayments: Nonfinancial institutions	0	0	0	15,056	15,056
	Incurrences: Nonfinancial institutions	0	0	0	3,400	3,400
832 (=332)	Foreign	4,580,340	3,211	4,583,551	-2,802	4,580,749
	Repayments: foreign liabilities	6,507,812	73,262	6,581,074	2,802	6,583,876
	Incurrences: foreign liabilities	11,088,152	76,473	11,164,625	0	11,164,625
8321	General government	0	0	0	0	0
	Repayments: General Government	0	0	0	0	0
	Incurrences: General Government	0	0	0	0	0
8327	International organizations	1,064,004	0	1,064,004	0	1,064,004
	Repayments: International organizations	535,723	0	535,723	0	535,723
	Incurrences: International organizations	1,599,727	0	1,599,727	0	1,599,727
8328	Financial institutions other than international organizations	3,516,336	3,211	3,519,547	-2,802	3,516,745
	Repayments: Financial institutions other than international organizations	5,972,089	73,262	6,045,351	2,802	6,048,153
	Incurrences: Financial institutions other than international organizations	9,488,425	76,473	9,564,898	0	9,564,898
8329	Other nonresidents	0	0	0	0	0
	Repayments: Other nonresidents	0	0	0	0	0
	Incurrences: Other nonresidents	0	0	0	0	0

Source: Ministry of Finance

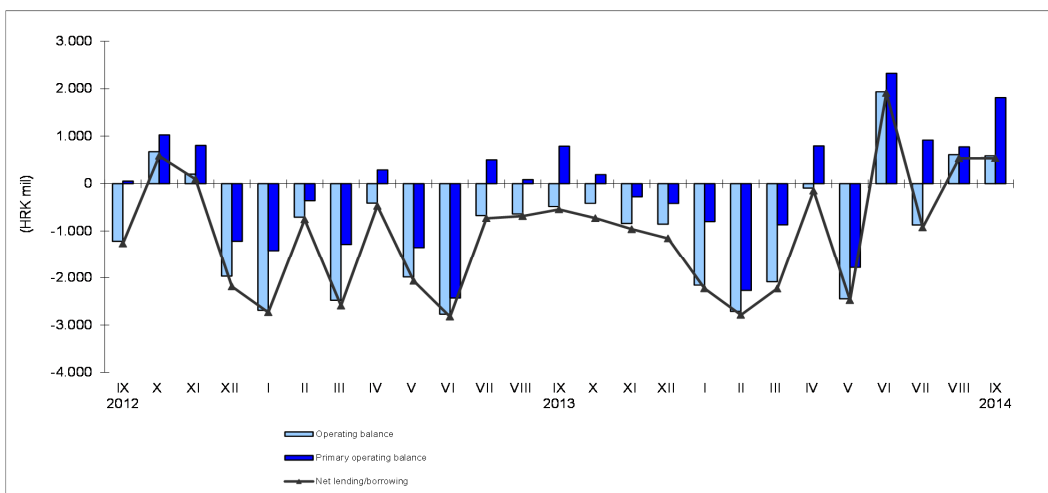
TABLE 8: STATEMENT OF BUDGETARY CENTRAL GOVERNMENT OPERATIONS

(000 HRK)	2011	2012	2013	VII - IX 2013	X - XII 2013	2014 Plan	I - III 2014	IV - VI 2014	VII - IX 2014	I - IX 2014	IX 2014
TRANSACTIONS AFFECTING NET WORTH											
1 REVENUE (11+12+13+14)	107,069,670	109,558,928	108,585,049	27,564,842	28,849,268	116,748,962	24,990,937	30,622,422	29,999,366	85,612,725	10,524,103
11 Taxes	61,422,186	64,693,898	63,044,946	15,995,941	16,406,339	63,965,364	14,058,025	15,536,391	17,689,893	47,284,309	6,470,903
12 Social contributions	38,605,067	37,845,871	37,149,263	9,532,788	9,468,162	41,855,487	9,032,710	12,683,411	10,083,954	31,800,075	3,310,935
13 Grants	868,988	968,378	1,737,825	580,481	652,458	4,256,167	179,845	1,074,457	363,984	1,618,285	85,739
14 Other revenue	6,173,430	6,050,782	6,653,016	1,455,632	2,322,309	6,671,944	1,720,357	1,328,164	1,861,535	4,910,056	656,526
2 EXPENSE (21+22+24+25+26+27+28)	119,939,511	118,729,992	123,505,883	29,351,360	30,953,742	128,085,807	31,942,910	31,221,479	29,666,759	92,831,148	9,936,135
21 Compensation of employees	31,737,350	31,383,210	30,461,818	7,561,158	7,553,996	30,094,678	7,547,378	7,488,319	7,514,506	22,550,203	2,512,975
22 Use of goods and services	7,943,604	7,406,320	7,537,416	1,676,142	2,426,313	7,618,314	1,509,023	1,689,776	1,584,059	4,782,858	490,937
24 Interest	7,097,592	8,335,656	9,259,196	3,168,326	1,606,097	10,801,074	3,022,396	1,939,972	3,176,863	8,139,231	1,226,657
25 Subsidies	6,555,277	5,762,321	5,537,845	777,568	1,007,966	5,627,889	1,910,165	1,805,764	704,995	4,420,924	254,392
26 Grants	5,083,665	4,843,769	6,511,699	1,945,126	2,121,721	8,191,239	2,647,313	1,994,672	1,724,103	6,366,088	557,797
27 Social benefits	56,482,968	56,169,850	58,943,356	12,848,804	14,840,246	58,953,557	13,956,230	15,003,180	13,740,365	42,699,775	4,569,374
28 Other expense	5,039,054	4,828,865	5,254,553	1,374,237	1,397,403	6,799,056	1,350,405	1,299,796	1,221,868	3,872,069	324,003
NET-GROSS OPERATING BALANCE (1-2)	-12,869,841	-9,171,064	-14,920,833	-1,786,518	-2,104,473	-11,336,845	-6,951,972	-599,057	332,607	-7,218,423	587,968
TRANSACTIONS IN NONFINANCIAL ASSETS											
31 NET ACQUISITION OF NONFINANCIAL ASSETS (311+312+313+314)	1,138,970	829,626	1,304,518	165,150	736,924	2,250,171	289,592	112,339	183,749	585,680	50,043
311 Fixed assets	1,118,710	772,151	1,036,609	154,763	496,263	1,973,787	151,838	187,859	182,649	522,346	54,771
312 Change in inventories	2,473	29,280	225,477	5,482	219,329	122,563	104,467	-104,358	-24,948	-24,839	-12,149
313 Valuables	3,741	3,494	1,333	987	336	3,111	4	6	2	11	1
314 Nonproduced assets	14,046	24,700	41,099	3,918	20,996	150,710	33,283	28,833	26,046	88,162	7,420
NET LENDING-BORROWING (1-2-31)	-14,008,811	-10,000,689	-16,225,351	-1,951,668	-2,841,397	-13,587,016	-7,241,565	-711,396	148,858	-7,804,103	537,925
FINANCING (33-32)	14,008,811	10,000,689	16,225,351	1,951,668	2,841,397	13,587,016	7,241,565	711,396	-148,858	7,804,103	-537,925
32 NET ACQUISITION OF FINANCIAL ASSETS (321+322)	-618,448	-461,514	14,214,400	601,023	9,547,633	-2,635,238	-5,546,910	3,016,649	-4,000,347	-6,530,608	-4,882,179
321 Domestic	-623,788	-468,017	14,009,154	600,708	9,343,695	-2,846,251	-5,547,837	3,016,649	-4,000,347	-6,531,535	-4,882,179
322 Foreign	5,341	6,503	205,245	315	203,938	211,013	927	0	0	927	0
33 NET INCURRENCE OF LIABILITIES (331+332)	13,390,363	9,539,175	30,439,751	2,552,691	12,389,030	10,951,778	1,694,655	3,728,045	-4,149,205	1,273,495	-5,420,104
331 Domestic	4,793,136	1,413,994	8,904,914	2,528,989	925,630	4,926,635	3,331,319	-1,112,984	-5,525,180	-3,306,845	-5,377,911
332 Foreign	8,597,227	8,125,181	21,534,837	23,702	11,463,400	6,025,143	-1,636,665	4,841,029	1,375,975	4,580,340	-42,193

Source: Ministry of Finance

MEASURES OF BUDGETARY CENTRAL GOVERNMENT DEFICIT/SURPLUS
TABLE 8A: OPERATING BALANCE AND PRIMARY OPERATING BALANCE (000 HRK)

	Revenues (1)	Expense (2)	Operating balance	Interest payments (24)	Primary operating balance
	(1)	(2)	(3) 1-2	(4)	(5) 3+4
IX	8,456,466	9,670,465	-1,213,999	1,269,027	55,028
X	10,240,713	9,565,373	675,340	354,872	1,030,212
XI	9,319,461	9,118,290	201,171	606,360	807,532
XII	8,941,860	10,906,531	-1,964,671	751,702	-1,212,969
I-XII 2012	109,558,928	118,729,992	-9,171,064	8,335,656	-835,407
I 2013	7,990,983	10,678,663	-2,687,680	1,272,009	-1,415,671
II	8,240,124	8,946,821	-706,697	348,389	-358,308
III	8,722,644	11,198,814	-2,476,171	1,194,615	-1,281,556
IV	9,365,068	9,774,069	-409,001	699,930	290,929
V	8,354,439	10,335,795	-1,981,356	630,630	-1,350,726
VI	9,497,681	12,266,619	-2,768,938	339,199	-2,429,739
VII	9,458,995	10,129,105	-670,111	1,172,972	502,861
VIII	8,637,920	9,273,345	-635,425	723,083	87,657
IX	9,467,927	9,948,909	-480,982	1,272,272	791,290
X	9,624,448	10,037,796	-413,349	606,089	192,740
XI	8,935,731	9,775,450	-839,720	563,071	-276,648
XII	10,289,090	11,140,495	-851,405	436,937	-414,468
I-XII 2013	108,585,049	123,505,883	-14,920,833	9,259,196	-5,661,637
I 2014	8,982,893	11,139,359	-2,156,466	1,359,702	-796,763
II	7,787,584	10,498,738	-2,711,155	443,726	-2,267,429
III	8,220,460	10,304,813	-2,084,352	1,218,968	-865,385
IV	9,858,572	9,948,319	-89,746	887,280	797,534
V	8,280,863	10,725,875	-2,445,013	663,056	-1,781,957
VI	12,482,987	10,547,285	1,935,702	389,636	2,325,338
VII	10,092,136	10,959,812	-867,676	1,787,058	919,382
VIII	9,383,127	8,770,812	612,315	163,148	775,463
IX	10,524,103	9,936,135	587,968	1,226,657	1,814,625
I- IX 2014	85,612,725	92,831,148	-7,218,423	8,139,231	920,808

MEASURES OF BUDGETARY CENTRAL GOVERNMENT DEFICIT/SURPLUS

TABLE 8B: NET LENDING/BORROWING (000 HRK)

	Operating balance	Net acquisition of nonfinancial assets (31)	Net lending/borrowing*	Financing (33-32)	Net acquisition of financial assets (32)	Net incurrence of liabilities (33)
	(1)	(2)	(3) 1-2	(4) 6-5	(5)	(6)
IX	-1,213,999	51,010	-1,265,009	1,265,009	-2,060,388	-795,379
X	675,340	89,241	586,099	-586,099	1,045,905	459,806
XI	201,171	106,470	94,701	-94,701	133,914	39,213
XII	-1,964,671	220,728	-2,185,399	2,185,399	-3,100,877	-915,479
I-XII 2012	-9,171,064	829,626	-10,000,689	10,000,689	-461,514	9,539,175
I 2013	-2,687,680	44,550	-2,732,230	2,732,230	-137,632	2,594,598
II	-706,697	45,508	-752,205	752,205	220,159	972,363
III	-2,476,171	114,116	-2,590,287	2,590,287	-676,869	1,913,418
IV	-409,001	58,409	-467,409	467,409	7,527,438	7,994,847
V	-1,981,356	84,850	-2,066,206	2,066,206	-1,621,803	444,403
VI	-2,768,938	55,011	-2,823,949	2,823,949	-1,245,548	1,578,401
VII	-670,111	58,233	-728,344	728,344	2,535,891	3,264,235
VIII	-635,425	47,539	-682,965	682,965	-1,459,297	-776,333
IX	-480,982	59,377	-540,359	540,359	-475,571	64,788
X	-413,349	313,228	-726,577	726,577	-157,400	569,177
XI	-839,720	119,588	-959,308	959,308	9,247,594	10,206,902
XII	-851,405	304,108	-1,155,513	1,155,513	457,438	1,612,951
I-XII 2013	-14,920,833	1,304,518	-16,225,351	16,225,351	14,214,400	30,439,751
I 2014	-2,156,466	69,623	-2,226,088	2,226,088	-1,698,884	527,205
II	-2,711,155	75,648	-2,786,803	2,786,803	701,756	3,488,559
III	-2,084,352	144,322	-2,228,674	2,228,674	-4,549,782	-2,321,109
IV	-89,746	58,233	-147,980	147,980	-4,122,200	-3,974,220
V	-2,445,013	28,959	-2,473,972	2,473,972	7,068,633	9,542,604
VI	1,935,702	25,147	1,910,555	-1,910,555	70,216	-1,840,339
VII	-867,676	55,796	-923,472	923,472	407,122	1,330,595
VIII	612,315	77,910	534,405	-534,405	474,710	-59,695
IX	587,968	50,043	537,925	-537,925	-4,882,179	-5,420,104
I- IX 2014	-7,218,423	585,680	-7,804,103	7,804,103	-6,530,608	1,273,495

* Deficit/surplus according to the GFS 2001 methodology

Source: Ministry of Finance

TABLE 9: CROATIAN WATERS TRANSACTIONS

	(000 HRK)	2011	2012	2013	VII - IX 2013	X - XII 2013	2014 Plan	I - III 2014	IV - VI 2014	VII - IX 2014	I - IX 2014	IX 2014	I - IX 2014 2014 Plan
1	REVENUE (11+12+13+14)	1,919,586	1,860,067	2,010,556	470,095	649,828	2,358,668	375,024	482,466	673,090	1,530,580	251,235	64.9
11	Taxes	0	0	0	0	0	0	0	0	0	0	0	
12	Social security contributions	0	0	0	0	0	0	0	0	0	0	0	
13	Grants (131+132+133)	339,390	288,672	298,199	44,901	150,327	362,727	17,890	43,015	65,093	125,998	38,945	34.7
131	From foreign governments	0	0	0	0	0	0	0	0	0	0	0	
132	From international organizations	2,740	1,557	2,482	0	2,482	14,100	0	1,136	262	1,398	0	9.9
133	From other general government units (1331+1332)	336,650	287,115	295,717	44,901	147,845	348,627	17,890	41,879	64,831	124,600	38,945	35.7
1331	Current	700	3,130	3	0	-109	8,861	20	0	0	20	0	
1332	Capital	335,950	283,985	295,714	44,901	147,954	339,766	17,870	41,879	64,831	124,580	38,945	36.7
14	Other revenue	1,580,196	1,571,395	1,712,357	425,194	499,501	1,995,941	357,134	439,451	607,997	1,404,582	212,290	70.4
2	EXPENSE (21+22+24+25+26+27+28)	1,459,634	1,455,994	1,514,633	398,918	468,664	1,628,718	211,965	399,348	398,502	1,009,815	156,026	62.0
21	Compensation of employees (211+212)	118,327	117,691	121,755	30,140	31,903	126,914	31,462	32,079	32,113	95,654	11,569	75.4
211	Wages and salaries	101,870	102,460	106,351	26,373	27,849	110,735	27,454	27,571	27,510	82,535	9,918	74.5
212	Social contributions	16,457	15,231	15,404	3,767	4,054	16,179	4,008	4,508	4,603	13,119	1,651	81.1
22	Use of goods and services	930,804	875,886	834,018	266,817	231,052	808,947	134,591	240,763	217,440	592,794	71,474	73.3
24	Interest	30,438	46,035	67,062	10,812	23,634	95,060	17,406	20,903	23,669	61,978	18,823	65.2
25	Subsidies	0	0	0	0	0	0	0	0	0	0	0	
26	Grants	28,447	30,257	69,152	14,703	29,469	42,097	86	12,253	15,059	27,398	1,291	65.1
27	Social benefits	0	0	0	0	0	0	0	0	0	0	0	
28	Other expense	351,618	386,125	422,646	76,446	152,606	555,700	28,420	93,350	110,221	231,991	52,869	41.7
	NET-GROSS OPERATING BALANCE (1-2)	459,952	404,073	495,923	71,177	181,164	729,950	163,059	83,118	274,588	520,765	95,209	
31	NET ACQUISITION OF NONFINANCIAL ASSETS (31,1-31,2)	1,185,008	1,319,375	1,052,728	206,111	291,124	819,350	98,421	140,513	253,633	492,567	79,697	60.1
31,1	Acquisition of nonfinancial assets (311,1+312,1+313,1+314,1)	1,185,123	1,319,451	1,053,503	206,132	291,845	819,450	98,437	140,866	253,648	492,951	79,702	60.2
31,2	Disposal of nonfinancial assets (311,2+312,2+313,2+314,2)	115	76	775	21	721	100	16	353	15	384	5	
311	Fixed assets (311,1-311,2-311,3)	1,159,853	1,291,144	1,038,681	203,678	284,176	805,780	90,527	137,870	251,358	479,755	78,902	59.5
311,1	Acquisitions: fixed assets	1,159,968	1,291,220	1,039,456	203,699	284,897	805,880	90,543	138,223	251,373	480,139	78,907	59.6
311,2	Disposals: fixed assets	115	76	775	21	721	100	16	353	15	384	5	
314	Nonproduced assets (314,1-314,2-314,3-314,4)	25,155	28,231	14,047	2,433	6,948	13,570	7,894	2,643	2,275	12,812	795	94.4
314	Acquisitions: nonproduced assets	25,155	28,231	14,047	2,433	6,948	13,570	7,894	2,643	2,275	12,812	795	94.4
314,2	Disposals: nonproduced assets	0	0	0	0	0	0	0	0	0	0	0	
	NET LENDING-BORROWING (1-2-31)	-725,056	-915,302	-556,805	-134,934	-109,960	-89,400	64,638	-57,395	20,955	28,198	15,512	
	FINANCING (33-32)	725,056	915,302	556,805	134,934	109,960	89,400	-64,638	57,395	-20,955	-28,198	-15,512	
32	NET ACQUISITION OF FINANCIAL ASSETS (321+322)	38,016	-161,607	-33,085	-61,964	-3,492	0	9,301	-1,960	188,556	195,897	-28,930	
321	Domestic	38,016	-161,607	-33,085	-61,964	-3,492	0	9,301	-1,960	188,556	195,897	-28,930	
322	Foreign	0	0	0	0	0	0	0	0	0	0	0	
33	NET INCURRENCE OF LIABILITIES (331+332)	763,072	753,695	523,720	72,970	106,468	89,400	-55,337	55,435	167,601	167,699	-44,442	
331	Domestic	777,014	767,823	532,502	75,290	108,551	98,232	-52,971	57,502	169,961	174,492	-44,442	
332	Foreign	-13,942	-14,128	-8,782	-2,320	-2,083	-8,832	-2,366	-2,067	-2,360	-6,793	0	

Source: Ministry of Finance

TABLE 10: FUND FOR ENVIRONMENTAL PROTECTION AND ENERGY EFFICIENCY TRANSACTIONS

(000 HRK)		2011	2012	2013	VII - IX 2013	X - XII 2013	2014 Plan	I - III 2014	IV - VI 2014	VII - IX 2014	I - IX 2014	IX 2014	I - IX 2014 2014 Plan
1	REVENUE (11+12+13+14)	1,091,289	1,056,742	1,039,054	267,428	307,310	1,391,196	240,525	288,914	316,679	846,118	89,707	60.8
11	Taxes	0	0	0	0	0	0	0	0	0	0	0	
12	Social security contributions	0	0	0	0	0	0	0	0	0	0	0	
13	Grants (131+132+133)	22,246	7,457	6,946	0	6,946	83,748	5,426	15,375	7,293	28,094	4,578	33.5
131	From foreign governments	0	0	0	0	0	0	0	0	0	0	0	
132	From international organizations	0	0	418	0	418	3,918	0	0	792	792	792	20.2
133	From other general government units (1331+1332)	22,246	7,457	6,528	0	6,528	79,830	5,426	15,375	6,501	27,302	3,786	34.2
1331	Current	438	1,631	1,404	0	1,404	1,558	80	0	782	862	0	55.3
1332	Capital	21,808	5,826	5,124	0	5,124	78,272	5,346	15,375	5,719	26,440	3,786	33.8
14	Other revenue	1,069,043	1,049,285	1,032,108	267,428	300,364	1,307,448	235,099	273,539	309,386	818,024	85,129	62.6
2	EXPENSE (21+22+24+25+26+27+28)	915,778	959,728	884,081	245,100	293,633	1,248,465	209,280	227,441	319,755	756,476	130,655	60.6
21	Compensation of employees (211+212)	23,411	28,432	30,494	7,724	9,027	38,260	9,519	9,599	9,765	28,883	3,208	75.5
211	Wages and salaries	20,077	24,854	26,714	6,749	7,891	33,220	8,362	8,268	8,419	25,049	2,762	75.4
212	Social contributions	3,334	3,578	3,780	975	1,136	5,040	1,157	1,331	1,346	3,834	446	76.1
22	Use of goods and services	763,362	797,901	713,611	210,586	213,658	824,825	144,605	156,196	210,773	511,574	86,685	62.0
24	Interest	139	4,517	5	0	1	290	1	0	1	2	1	0.7
25	Subsidies	7,154	983	3,418	212	2,395	20,191	2,332	1,423	3,106	6,861	935	34.0
26	Grants	98,046	111,341	126,265	25,842	65,936	266,820	50,497	57,646	83,419	191,562	33,585	71.8
27	Social benefits	0	0	0	0	0	0	0	0	0	0	0	
28	Other expense	23,666	16,554	10,288	736	2,616	98,079	2,326	2,577	12,691	17,594	6,241	17.9
	NET-GROSS OPERATING BALANCE (1-2)	175,511	97,014	154,973	22,328	13,677	142,731	31,245	61,473	-3,076	89,642	-40,948	
31	NET ACQUISITION OF NONFINANCIAL ASSETS (31,1-31,2)	62,344	20,141	55,391	724	35,957	335,401	27,091	69,240	23,515	119,846	15,569	35.7
31,1	Acquisition of nonfinancial assets (311,1+312,1+313,1+314,1)	62,344	20,365	55,394	724	35,957	335,401	27,091	69,251	23,515	119,857	15,569	35.7
31,2	Disposal of nonfinancial assets (311,2+312,2+313,2+314,2)	0	224	3	0	0	0	0	11	0	11	0	
311	Fixed assets (311,1-311,2-311,3)	62,344	20,141	55,391	724	35,957	335,401	27,091	69,240	23,515	119,846	15,569	35.7
311,1	Acquisitions: fixed assets	62,344	20,365	55,394	724	35,957	335,401	27,091	69,251	23,515	119,857	15,569	35.7
311,2	Disposals: fixed assets	0	224	3	0	0	0	0	11	0	11	0	
314	Nonproduced assets (314,1-314,2-314,3-314,4)	0	0	0	0	0	0	0	0	0	0	0	
314,1	Acquisitions: nonproduced assets	0	0	0	0	0	0	0	0	0	0	0	
314,2	Disposals: nonproduced assets	0	0	0	0	0	0	0	0	0	0	0	
	NET LENDING-BORROWING (1-2-31)	113,167	76,873	99,582	21,604	-22,280	-192,670	4,154	-7,767	-26,591	-30,204	-56,517	
	FINANCING (33-32)	-113,167	-76,873	-99,582	-21,604	22,280	192,670	-4,154	7,767	26,591	30,204	56,517	
32	NET ACQUISITION OF FINANCIAL ASSETS (321+322)	113,167	76,873	99,582	21,604	-22,280	-192,670	4,154	-7,767	-26,591	-30,204	-56,517	
321	Domestic	113,167	76,873	99,582	21,604	-22,280	-192,670	4,154	-7,767	-26,591	-30,204	-56,517	
322	Foreign	0	0	0	0	0	0	0	0	0	0	0	
33	NET INCURRENCE OF LIABILITIES (331+332)	0	0	0	0	0	0	0	0	0	0	0	
331	Domestic	0	0	0	0	0	0	0	0	0	0	0	
332	Foreign	0	0	0	0	0	0	0	0	0	0	0	

Source: Ministry of Finance

TABLE 11: CROATIAN MOTORWAYS Ltd. TRANSACTIONS

	(000 HRK)	2005	2006	2007	I - III 2007	IV - VI 2007	VII - IX 2007	X - XII 2007
1	REVENUE (11+12+13+14)	2,547,003	2,721,483	4,391,205	554,476	729,978	981,840	2,124,911
11	Taxes	1,380,753	0	0	0	0	0	0
1142	Excises	1,380,753	0	0	0	0	0	0
12	Social security contributions	0	0	0	0	0	0	0
13	Grants (131+132+133)	0	1,450,358	3,015,869	316,773	374,169	450,041	1,874,886
131	From foreign governments	0	0	0	0	0	0	0
132	From international organizations	0	0	0	0	0	0	0
133	From other general government units (1331+1332)	0	1,450,358	3,015,869	316,773	374,169	450,041	1,874,886
1331	Current	0	0	0	0	0	0	0
1332	Capital	0	1,450,358	3,015,869	316,773	374,169	450,041	1,874,886
14	Other revenue	1,166,250	1,271,125	1,375,336	237,703	355,809	531,799	250,025
2	EXPENSE (21+22+24+25+26+27+28)	1,088,687	1,574,490	1,982,632	343,052	514,269	343,805	781,506
21	Compensation of employees (211+212)	289,866	320,097	354,412	82,595	83,694	98,706	89,417
211	Wages and salaries	250,374	276,180	305,329	71,317	72,044	84,598	77,370
212	Social contributions	39,492	43,917	49,083	11,278	11,650	14,108	12,047
22	Use of goods and services	314,534	301,452	326,437	63,067	100,011	82,947	80,412
24	Interest	445,185	589,173	787,824	116,150	280,254	74,985	316,435
25	Subsidies	0	0	0	0	0	0	0
26	Grants	3,610	301,777	474,244	68,562	48,620	82,062	275,000
27	Social benefits	0	0	0	0	0	0	0
28	Other expense	35,492	61,991	39,715	12,678	1,690	5,105	20,242
	NET-GROSS OPERATING BALANCE (1-2)	1,458,316	1,146,993	2,408,573	211,424	215,709	638,035	1,343,405
31	NET ACQUISITION OF NONFINANCIAL ASSETS (31,1-31,2)	3,942,727	2,949,761	3,369,269	582,659	823,712	1,003,657	959,241
31,1	Acquisition of nonfinancial assets (311,1+312,1+313,1+314,1)	3,942,727	3,249,761	3,386,216	595,911	823,712	1,003,657	962,936
31,2	Disposal of nonfinancial assets (311,2+312,2+313,2+314,2)	0	300,000	16,947	13,252	0	0	3,695
311	Fixed assets (311,1-311,2-311,3)	3,825,950	2,748,525	3,240,471	548,763	787,927	915,816	987,965
311,1	Acquisitions: fixed assets	3,825,950	3,048,525	3,257,418	562,015	787,927	915,816	991,660
311,2	Disposals: fixed assets	0	300,000	16,947	13,252	0	0	3,695
314	Nonproduced assets (314,1-314,2-314,3-314,4)	116,777	201,236	128,798	33,896	35,785	87,841	-28,724
314,1	Acquisitions: nonproduced assets	116,777	201,236	128,798	33,896	35,785	87,841	-28,724
314,2	Disposals: nonproduced assets	0	0	0	0	0	0	0
	NET LENDING-BORROWING (1-2-31)	-2,484,411	-1,802,768	-960,696	-371,235	-608,003	-365,622	384,164
	FINANCING (33-32)	2,484,411	1,802,768	960,696	371,235	608,003	365,622	-384,164
32	NET ACQUISITION OF FINANCIAL ASSETS (321+322)	-42,758	248,366	289,126	-234,657	101,490	-43,950	466,243
321	Domestic	-42,758	248,366	289,126	-234,657	101,490	-43,950	466,243
322	Foreign	0	0	0	0	0	0	0
33	NET INCURRENCE OF LIABILITIES (331+332)	2,441,653	2,051,134	1,249,822	136,578	709,493	321,672	82,079
331	Domestic	1,698,272	1,758,422	-87,997	220,507	221,496	0	-530,000
332	Foreign	743,381	292,712	1,337,819	-83,929	487,997	321,672	612,079

Source: Ministry of Finance

TABLE 12: CROATIAN ROADS Ltd. TRANSACTIONS

	(000 HRK)	2011	2012	2013	VII - IX 2013	X - XII 2013	2014 Plan	I - III 2014	IV - VI 2014	VII - IX 2014	I - IX 2014	IX 2014	I - IX 2014 2014 Plan
1	REVENUE (11+12+13+14)	1,447,462	1,454,458	1,439,662	456,794	293,894	1,817,500	458,098	382,105	537,940	1,378,143	181,925	75.8
11	Taxes	0	0	0	0	0	0	0	0	0	0	0	
1142	Excises	0	0	0	0	0	0	0	0	0	0	0	
12	Social security contributions	0	0	0	0	0	0	0	0	0	0	0	
13	Grants (131+132+133)	1,390,000	1,399,041	1,388,202	447,690	274,534	1,762,500	442,706	371,250	523,962	1,337,918	177,646	75.9
131	From foreign governments	0	0	0	0	0	0	0	0	0	0	0	
132	From international organizations	0	0	0	0	0	2,500	0	0	0	0	0	
133	From other general government units (1331+1332)	1,390,000	1,399,041	1,388,202	447,690	274,534	1,760,000	442,706	371,250	523,962	1,337,918	177,646	76.0
1331	Current	0	3,641	0	0	0	0	0	0	0	0	0	
1332	Capital	1,390,000	1,395,400	1,388,202	447,690	274,534	1,760,000	442,706	371,250	523,962	1,337,918	177,646	76.0
14	Other revenue	57,462	55,417	51,460	9,104	19,360	55,000	15,392	10,855	13,978	40,225	4,279	73.1
2	EXPENSE (21+22+24+25+26+27+28)	1,320,918	1,276,972	1,478,081	404,774	454,808	1,845,513	298,103	264,494	424,415	987,012	133,152	53.5
21	Compensation of employees (211+212)	86,815	87,801	90,933	22,145	22,081	95,793	22,112	22,622	23,754	68,488	7,929	71.5
211	Wages and salaries	74,613	76,132	79,470	19,352	19,311	83,757	19,330	19,559	20,393	59,282	6,802	70.8
212	Social contributions	12,202	11,669	11,463	2,793	2,770	12,036	2,782	3,063	3,361	9,206	1,127	76.5
22	Use of goods and services	686,539	655,091	920,487	251,358	294,011	1,087,720	159,598	148,584	237,077	545,259	61,463	50.1
24	Interest	283,868	295,772	314,401	90,635	72,460	527,500	98,268	85,613	111,427	295,308	25,757	56.0
25	Subsidies	0	0	0	0	0	0	0	0	0	0	0	
26	Grants	0	0	141,526	0	141,526	120,000	15,939	5,800	50,444	72,183	37,129	60.2
27	Social benefits	0	0	0	0	0	0	0	0	0	0	0	
28	Other expense	263,696	238,308	10,734	40,636	-75,270	14,500	2,186	1,875	1,713	5,774	874	39.8
	NET-GROSS OPERATING BALANCE (1-2)	126,544	177,486	-38,419	52,020	-160,914	-28,013	159,995	117,611	113,525	391,131	48,773	
31	NET ACQUISITION OF NONFINANCIAL ASSETS (31,1-31,2)	1,013,340	983,156	1,267,712	368,390	229,259	1,564,464	233,165	165,643	257,640	656,448	78,375	42.0
31,1	Acquisition of nonfinancial assets (311,1+312,1+313,1+314,1)	1,017,552	985,528	1,268,295	368,494	229,410	1,564,464	233,276	165,748	257,756	656,780	78,405	42.0
31,2	Disposal of nonfinancial assets (311,2+312,2+313,2+314,2)	4,212	2,372	583	104	151	0	111	105	116	332	30	
311	Fixed assets (311,1-311,2-311,3)	885,651	873,632	1,109,623	341,570	194,535	1,397,794	194,579	140,186	236,415	571,180	72,370	40.9
311,1	Acquisitions: fixed assets	889,863	876,004	1,110,206	341,674	194,686	1,397,794	194,690	140,291	236,531	571,512	72,400	40.9
311,2	Disposals: fixed assets	4,212	2,372	583	104	151	0	111	105	116	332	30	
314	Nonproduced assets (314,1-314,2-314,3-314,4)	127,689	109,524	158,089	26,820	34,724	166,670	38,586	25,457	21,225	85,268	6,005	51.2
314,1	Acquisitions: nonproduced assets	127,689	109,524	158,089	26,820	34,724	166,670	38,586	25,457	21,225	85,268	6,005	51.2
314,2	Disposals: nonproduced assets	0	0	0	0	0	0	0	0	0	0	0	
	NET LENDING-BORROWING (1-2-31)	-886,796	-805,670	-1,306,131	-316,370	-390,173	-1,592,477	-73,170	-48,032	-144,115	-265,317	-29,602	
	FINANCING (33-32)	886,796	805,670	1,306,131	316,370	390,173	1,592,477	73,170	48,032	144,115	265,317	29,602	
32	NET ACQUISITION OF FINANCIAL ASSETS (321+322)	48,973	113,328	-251,763	6,161	236,646	0	144,193	-92,407	253,128	304,914	-135,636	
321	Domestic	48,973	113,328	-251,763	6,161	236,646	0	144,193	-92,407	253,128	304,914	-135,636	
322	Foreign	0	0	0	0	0	0	0	0	0	0	0	
33	NET INCURRENCE OF LIABILITIES (331+332)	935,769	918,998	1,054,368	322,531	626,819	1,592,477	217,363	-44,375	397,243	570,231	-106,034	
331	Domestic	895,422	946,007	985,389	328,597	578,074	1,497,877	223,351	-69,191	403,255	557,415	-100,022	
332	Foreign	40,347	-27,009	68,979	-6,066	48,745	94,600	-5,988	24,816	-6,012	12,816	-6,012	

Source: Ministry of Finance

TABLE 13: STATE AGENCY FOR DEPOSIT INSURANCE AND BANK REHABILITATION TRANSACTIONS

(000 HRK)		2011	2012	2013	VII - IX 2013	X - XII 2013	2014 Plan	I - III 2014	IV - VI 2014	VII - IX 2014	I - IX 2014	IX 2014	I - IX 2014 2014 Plan
1	REVENUE (11+12+13+14)	552,819	576,101	597,248	165,079	153,334	822,830	151,575	223,232	180,919	555,726	10,679	67.5
11	Taxes	0	0	0	0	0	0	0	0	0	0	0	
12	Social security contributions	0	0	0	0	0	0	0	0	0	0	0	
13	Grants (131+132+133)	0	0	0	0	0	0	0	0	0	0	0	
131	From foreign governments	0	0	0	0	0	0	0	0	0	0	0	
132	From international organizations	0	0	0	0	0	0	0	0	0	0	0	
133	From other general government units (1331+1332)	0	0	0	0	0	0	0	0	0	0	0	
1331	Current	0	0	0	0	0	0	0	0	0	0	0	
1332	Capital	0	0	0	0	0	0	0	0	0	0	0	
14	Other revenue	552,819	576,101	597,248	165,079	153,334	822,830	151,575	223,232	180,919	555,726	10,679	67.5
2	EXPENSE (21+22+24+25+26+27+28)	408,867	89,460	538,282	318,229	210,653	63,126	5,453	6,952	160,159	172,564	1,653	273.4
21	Compensation of employees (211+212)	7,454	7,482	6,051	1,341	1,182	6,666	1,217	1,334	1,175	3,726	406	55.9
211	Wages and salaries	6,389	6,486	5,297	1,184	1,031	5,757	1,061	1,143	1,015	3,219	349	55.9
212	Social contributions	1,065	996	754	157	151	909	156	191	160	507	57	55.8
22	Use of goods and services	10,917	5,687	6,745	636	1,721	6,235	4,195	5,565	-7,706	2,054	288	32.9
24	Interest	191	117	0	0	-1,065	200	0	0	0	0	0	
25	Subsidies	0	0	0	0	0	0	0	0	0	0	0	
26	Grants	0	0	0	0	0	0	0	0	0	0	0	
27	Social benefits	0	0	0	0	0	0	0	0	0	0	0	
28	Other expense	390,305	76,174	525,486	316,252	208,815	50,025	41	53	166,690	166,784	959	
	NET-GROSS OPERATING BALANCE (1-2)	143,952	486,641	58,966	-153,150	-57,319	759,704	146,122	216,280	20,760	383,162	9,026	
31	NET ACQUISITION OF NONFINANCIAL ASSETS (31,1-31,2)	312	145	134	62	72	1,295	34	0	32	66	0	5.1
31,1	Acquisition of nonfinancial assets (311,1+312,1+313,1+314,1)	312	145	134	62	72	1,295	34	0	32	66	0	5.1
31,2	Disposal of nonfinancial assets (311,2+312,2+313,2+314,2)	0	0	0	0	0	0	0	0	0	0	0	
311	Fixed assets (311,1-311,2-311,3)	312	145	134	62	72	1,295	6	0	32	38	0	2.9
311,1	Acquisitions: fixed assets	312	145	134	62	72	1,295	6	0	32	38	0	2.9
311,2	Disposals: fixed assets	0	0	0	0	0	0	0	0	0	0	0	
314	Nonproduced assets (314,1-314,2-314,3-314,4)	0	0	0	0	0	0	28	0	0	28	0	
314,1	Acquisitions: nonproduced assets	0	0	0	0	0	0	28	0	0	28	0	
314,2	Disposals: nonproduced assets	0	0	0	0	0	0	0	0	0	0	0	
	NET LENDING-BORROWING (1-2-31)	143,640	486,496	58,832	-153,212	-57,391	758,409	146,088	216,280	20,728	383,096	9,026	
	FINANCING (33-32)	-143,640	-486,496	-58,832	153,212	57,391	-758,409	-146,088	-216,280	-20,728	-383,096	-9,026	
32	NET ACQUISITION OF FINANCIAL ASSETS (321+322)	143,640	486,496	58,832	-153,212	-57,391	758,409	146,088	216,280	20,728	383,096	9,026	
321	Domestic	143,640	486,496	58,832	-153,212	-57,391	758,409	146,088	216,280	20,728	383,096	9,026	
322	Foreign	0	0	0	0	0	0	0	0	0	0	0	
33	NET INCURRENCE OF LIABILITIES (331+332)	0	0	0	0	0	0	0	0	0	0	0	
331	Domestic	0	0	0	0	0	0	0	0	0	0	0	
332	Foreign	0	0	0	0	0	0	0	0	0	0	0	

Source: Ministry of Finance

TABLE 14: CROATIAN PRIVATIZATION FUND TRANSACTIONS

	(000 HRK)	2009	2010	I - III 2010	IV - VI 2010	VII - IX 2010	X - XII 2010	I - III 2011
1	REVENUE (11+12+13+14)	33,540	26,702	9,830	6,515	4,947	5,410	1,892
11	Taxes	0	0	0	0	0	0	0
12	Social security contributions	0	0	0	0	0	0	0
13	Grants (131+132+133)	0	0	0	0	0	0	0
131	From foreign governments	0	0	0	0	0	0	0
132	From international organizations	0	0	0	0	0	0	0
133	From other general government units (1331+1332)	0	0	0	0	0	0	0
1331	Current	0	0	0	0	0	0	0
1332	Capital	0	0	0	0	0	0	0
14	Other revenue	33,540	26,702	9,830	6,515	4,947	5,410	1,892
2	EXPENSE (21+22+24+25+26+27+28)	81,841	74,004	18,164	17,306	19,638	18,896	16,161
21	Compensation of employees (211+212)	34,265	33,211	8,391	8,409	8,434	7,977	5,700
211	Wages and salaries	29,442	28,514	7,188	7,220	7,254	6,852	4,885
212	Social contributions	4,823	4,697	1,203	1,189	1,180	1,125	815
22	Use of goods and services	15,041	12,262	3,034	2,737	2,511	3,980	4,199
24	Interest	32,535	28,531	6,739	6,160	8,693	6,939	6,262
25	Subsidies	0	0	0	0	0	0	0
26	Grants	0	0	0	0	0	0	0
27	Social benefits	0	0	0	0	0	0	0
28	Other expense	0	0	0	0	0	0	0
	NET-GROSS OPERATING BALANCE (1-2)	-48,301	-47,302	-8,334	-10,791	-14,691	-13,486	-14,269
31	NET ACQUISITION OF NONFINANCIAL ASSETS (31,1-31,2)	-14,531	-5,935	-373	-6,324	-59	821	-929
31,1	Acquisition of nonfinancial assets (311,1+312,1+313,1+314,1)	839	925	45	0	0	880	0
31,2	Disposal of nonfinancial assets (311,2+312,2+313,2+314,2)	15,370	6,860	418	6,324	59	59	929
311	Fixed assets (311,1-311,2-311,3)	-7,240	690	-14	-58	-59	821	-60
311,1	Acquisitions: fixed assets	800	925	45	0	0	880	0
311,2	Disposals: fixed assets	8,040	235	59	58	59	59	60
	NET LENDING-BORROWING (1-2-31)	-33,770	-41,367	-7,961	-4,467	-14,632	-14,307	-13,340
	FINANCING (33-32)	33,770	41,367	7,961	4,467	14,632	14,307	13,340
32	NET ACQUISITION OF FINANCIAL ASSETS (321+322)	-26,890	44,243	-28,206	10,850	-34,410	96,009	62,991
321	Domestic	-26,890	44,243	-28,206	10,850	-34,410	96,009	62,991
322	Foreign	0	0	0	0	0	0	0
33	NET INCURRENCE OF LIABILITIES (331+332)	6,880	85,610	-20,245	15,317	-19,778	110,316	76,331
331	Domestic	-26,934	105,059	-14,048	17,108	-9,098	111,097	88,461
332	Foreign	33,814	-19,449	-6,197	-1,791	-10,680	-781	-12,130

Source: Ministry of Finance

TABLE 15: AGENCY FOR MANAGEMENT OF THE PUBLIC PROPERTY TRANSACTIONS

	(000 HRK)	2011	2012	X - XII 2012	I - III 2013	IV - VI 2013	VII - IX 2013	I - IX 2013	IX 2013
1	REVENUE (11+12+13+14)	41,216	56,687	16,837	14,805	16,669	17,773	49,247	7,038
11	Taxes	0	0	0	0	0	0	0	0
12	Social security contributions	0	0	0	0	0	0	0	0
13	Grants (131+132+133)	80	0	0	0	0	0	0	0
131	From foreign governments	0	0	0	0	0	0	0	0
132	From international organizations	0	0	0	0	0	0	0	0
133	From other general government units (1331+1332)	80	0	0	0	0	0	0	0
1331	Current	0	0	0	0	0	0	0	0
1332	Capital	80	0	0	0	0	0	0	0
14	Other revenue	41,136	56,687	16,837	14,805	16,669	17,773	49,247	7,038
2	EXPENSE (21+22+24+25+26+27+28)	84,648	97,832	27,689	29,012	38,738	71,111	138,861	18,382
21	Compensation of employees (211+212)	25,041	38,987	10,395	13,593	10,417	14,088	38,098	5,190
211	Wages and salaries	21,537	34,083	9,210	12,391	9,233	12,937	34,561	4,792
212	Social contributions	3,504	4,904	1,185	1,202	1,184	1,151	3,537	398
22	Use of goods and services	24,374	26,556	8,917	6,533	10,341	41,172	58,046	8,590
24	Interest	26,133	31,882	7,970	8,832	8,676	15,851	33,359	4,602
25	Subsidies	0	0	0	0	9,304	0	9,304	0
26	Grants	0	0	0	0	0	0	0	0
27	Social benefits	0	0	0	0	0	0	0	0
28	Other expense	9,100	407	407	54	0	0	54	0
	NET-GROSS OPERATING BALANCE (1-2)	-43,432	-41,145	-10,852	-14,207	-22,069	-53,338	-89,614	-11,344
31	NET ACQUISITION OF NONFINANCIAL ASSETS (31,1 - 31,2)	-26,544	-19,378	-9,868	-12,535	-2,838	-9,831	-25,204	-1,102
31,1	Acquisition of nonfinancial assets (311,1+312,1+313,1+314,1)	611	8,781	949	187	200	11	398	8
31,2	Disposal of nonfinancial assets (311,2+312,2+313,2+314,2)	27,155	28,159	10,817	12,722	3,038	9,842	25,602	1,110
311	Fixed assets (311,1-311,2-311,3)	-13,757	-8,028	-2,783	-4,612	-2,674	-8,851	-16,137	-493
311,1	Acquisitions: fixed assets	611	8,781	949	187	200	11	398	8
311,2	Disposals: fixed assets	14,368	16,809	3,732	4,799	2,874	8,862	16,535	501
314	Nonproduced assets (314,1-314,2-314,3-314,4)	-12,787	-11,350	-7,085	-7,923	-164	-980	-9,067	-609
314,1	Acquisitions: nonproduced assets	0	0	0	0	0	0	0	0
314,2	Disposals: nonproduced assets	12,787	11,350	7,085	7,923	164	980	9,067	609
	NET LENDING-BORROWING (1-2-31)	-16,888	-21,767	-984	-1,672	-19,231	-43,507	-64,410	-10,242
	FINANCING (33-32)	16,888	21,767	984	1,672	19,231	43,507	64,410	10,242
32	NET ACQUISITION OF FINANCIAL ASSETS (321+322)	52,016	-35,878	-5,259	-9,152	-34,455	108,596	64,989	-17,147
321	Domestic	52,016	-35,878	-5,259	-9,152	-34,455	108,596	64,989	-17,147
322	Foreign	0	0	0	0	0	0	0	0
33	NET INCURRENCE OF LIABILITIES (331+332)	68,904	-14,111	-4,275	-7,480	-15,224	152,103	129,399	-6,905
331	Domestic	88,580	13,909	2,742	-391	-8,392	159,609	150,826	0
332	Foreign	-19,676	-28,020	-7,017	-7,089	-6,832	-7,506	-21,427	-6,905

Source: Ministry of Finance

TABLE 16: RESTRUCTURING AND SALE CENTER

	(000 HRK)	2013	2014 Plan	I - III 2014	IV - VI 2014	VII - IX 2014	I - IX 2014	IX 2014	I - IX 2014 2014 Plan
1	REVENUE (11+12+13+14)	17,192	8,850	14,710	15,200	22,560	52,470	15,680	
11	Taxes	0	0	0	0	0	0	0	
12	Social security contributions	0	0	0	0	0	0	0	
13	Grants (131+132+133)	0	0	0	0	0	0	0	
131	From foreign governments	0	0	0	0	0	0	0	
132	From international organizations	0	0	0	0	0	0	0	
133	From other general government units (1331+1332)	0	0	0	0	0	0	0	
1331	Current	0	0	0	0	0	0	0	
1332	Capital	0	0	0	0	0	0	0	
14	Other revenue	17,192	8,850	14,710	15,200	22,560	52,470	15,680	
2	EXPENSE (21+22+24+25+26+27+28)	37,215	152,152	13,619	19,962	24,830	58,411	-243,989	38.4
21	Compensation of employees (211+212)	15,152	17,684	3,205	2,769	3,753	9,727	855	55.0
211	Wages and salaries	14,265	16,080	2,796	2,375	3,356	8,527	739	53.0
212	Social contributions	887	1,604	409	394	397	1,200	116	74.8
22	Use of goods and services	8,814	12,655	4,194	6,313	6,265	16,772	1,947	132.5
24	Interest	13,188	121,713	6,220	10,880	14,812	31,912	3,209	26.2
25	Subsidies	0	0	0	0	0	0	0	
26	Grants	0	0	0	0	0	0	0	
27	Social benefits	0	0	0	0	0	0	0	
28	Other expense	61	100	0	0	0	0	-250,000	
	NET-GROSS OPERATING BALANCE (1-2)	-20,023	-143,302	1,091	-4,762	-2,270	-5,941	259,669	
31	NET ACQUISITION OF NONFINANCIAL ASSETS (31,1 - 31,2)	-1,675	175,215	-1,626	-119	-159	-1,904	-86	
31,1	Acquisition of nonfinancial assets (311,1+312,1+313,1+314,1)	148	175,215	0	0	15	15	0	
31,2	Disposal of nonfinancial assets (311,2+312,2+313,2+314,2)	1,823	0	1,626	119	174	1,919	86	
311	Fixed assets (311,1-311,2-311,3)	-523	350	-409	-119	-151	-679	-86	
311,1	Acquisitions: fixed assets	148	350	0	0	15	15	0	4.3
311,2	Disposals: fixed assets	671	0	409	119	166	694	86	
314	Nonproduced assets (314,1-314,2-314,3-314,4)	-1,152	174,865	-1,217	0	-8	-1,225	0	
314,1	Acquisitions: nonproduced assets	0	174,865	0	0	0	0	0	
314,2	Disposals: nonproduced assets	1,152	0	1,217	0	8	1,225	0	
	NET LENDING-BORROWING (1-2-31)	-18,348	-318,517	2,717	-4,643	-2,111	-4,037	259,755	
	FINANCING (33-32)	18,348	318,517	-2,717	4,643	2,111	4,037	-259,755	
32	NET ACQUISITION OF FINANCIAL ASSETS (321+322)	209,657	-123,400	-4,848	-28,979	237,368	203,541	250,252	
321	Domestic	209,657	-123,400	-4,848	-28,979	237,368	203,541	250,252	
322	Foreign	0	0	0	0	0	0	0	
33	NET INCURRENCE OF LIABILITIES (331+332)	228,005	195,117	-7,565	-24,336	239,479	207,578	-9,503	
331	Domestic	228,617	199,001	-6,630	-23,404	240,424	210,390	-9,184	
332	Foreign	-612	-3,884	-935	-932	-945	-2,812	-319	

Source: Ministry of Finance

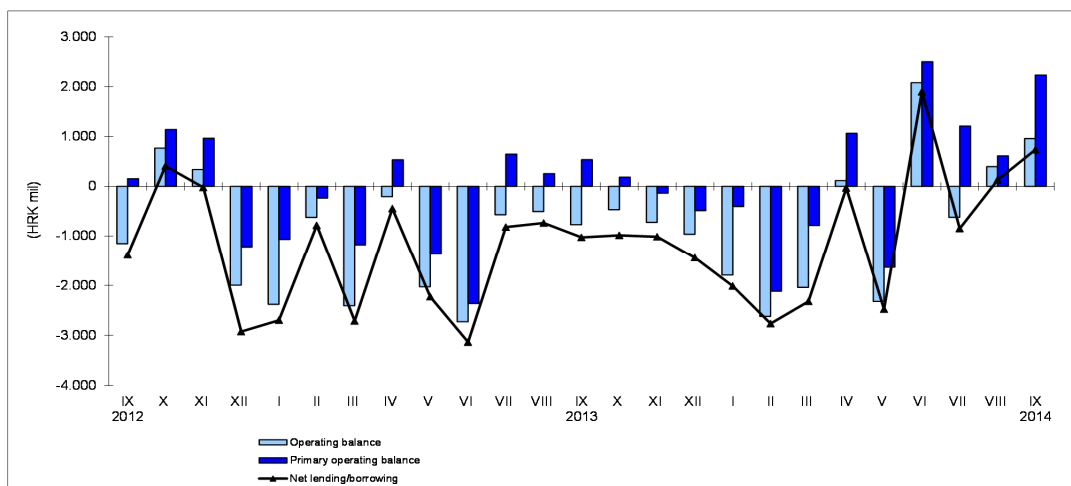
TABLE 17: CONSOLIDATED CENTRAL GOVERNMENT BY ECONOMIC CATEGORY

	(000 HRK)	2011	2012	2013	VII - IX 2013	X - XII 2013	2014 Plan	I - III 2014	IV - VI 2014	VII - IX 2014	I - IX 2014	IX 2014	I - IX 2014 2014 Plan
1	REVENUE (11+12+13+14)	110,406,122	112,883,471	112,051,132	28,448,778	29,846,074	121,024,845	25,770,269	31,599,853	31,132,525	88,502,647	10,854,344	73.1
11	Taxes (111+113+114+115+116)	61,422,186	64,693,898	63,044,946	15,995,941	16,406,339	63,965,364	14,058,025	15,536,391	17,689,893	47,284,309	6,470,903	73.9
111	Taxes of income and profits and capital gains	8,595,516	8,966,867	7,738,141	2,014,201	2,284,093	7,058,520	2,092,327	1,761,873	1,293,039	5,147,239	596,332	72.9
113	Taxes on property	448,489	397,736	462,315	100,325	127,074	457,616	91,941	94,467	93,762	280,170	35,507	61.2
114	Taxes on goods and services (1141+1142+1144+1145+1146)	50,244,065	53,205,019	53,349,544	13,661,989	13,849,125	55,734,016	11,685,877	13,489,095	16,145,355	41,320,326	5,786,167	74.1
1141	General taxes on goods and services (11411+11412)	37,847,826	40,778,865	40,388,379	9,751,808	10,371,719	42,100,863	8,771,024	10,130,160	11,852,982	30,754,166	4,331,359	73.0
11411	Value-added taxes	37,718,154	40,652,023	40,253,061	9,717,441	10,334,088	41,965,008	8,733,883	10,092,280	11,814,268	30,640,431	4,317,468	73.0
11412	Sales taxes	129,672	126,841	135,319	34,368	37,631	135,855	37,141	37,880	38,714	113,735	13,891	83.7
1142	Excises	11,215,054	11,206,489	11,682,936	3,619,121	3,082,003	12,041,023	2,601,521	3,072,390	4,015,752	9,689,662	1,367,359	80.5
115	Taxes on international trade and transactions	1,766,356	1,754,364	1,159,371	152,026	172,470	388,647	119,993	117,964	83,655	321,612	29,695	82.8
116	Other taxes	367,761	369,912	335,576	67,400	73,578	326,565	67,888	72,992	74,082	214,962	23,202	65.8
12	Social contributions	38,605,067	37,845,871	37,149,263	9,532,788	9,468,162	41,855,487	9,032,710	12,683,411	10,083,954	31,800,075	3,310,935	76.0
13	Grants	902,892	984,036	1,746,263	580,290	661,030	4,341,981	185,266	1,089,611	368,378	1,643,255	89,191	37.8
14	Other revenue	9,475,978	9,359,667	10,110,660	2,339,759	3,310,543	10,862,013	2,494,267	2,290,441	2,990,300	7,775,008	983,315	71.6
2	EXPENSE (21+22+24+25+26+27+28)	122,427,705	120,930,466	126,410,159	30,295,161	31,995,060	130,900,620	32,220,729	31,725,191	30,396,391	94,342,311	9,894,647	72.1
21	Compensation of employees (211+212)	32,004,098	31,663,603	30,764,301	7,636,596	7,633,341	30,379,995	7,614,893	7,556,722	7,585,066	22,756,681	2,536,942	74.9
211	Wages and salaries	27,161,762	27,154,053	26,552,669	6,587,534	6,597,541	26,025,077	6,581,528	6,450,674	6,438,060	19,470,261	2,154,958	74.8
212	Social contributions	4,842,336	4,509,550	4,211,632	1,049,062	1,035,800	4,354,918	1,033,366	1,106,048	1,147,006	3,286,420	381,984	75.5
22	Use of goods and services	10,363,799	9,767,441	10,079,137	2,445,177	3,177,103	10,358,696	1,956,206	2,247,197	2,247,908	6,451,311	712,794	62.3
24	Interest	7,444,623	8,713,979	9,685,243	3,285,609	1,712,362	11,545,837	3,144,291	2,057,368	3,320,697	8,522,356	1,273,179	73.8
25	Subsidies	6,562,431	5,763,304	5,550,567	777,780	1,010,361	5,648,080	1,912,497	1,807,187	708,101	4,427,785	255,327	78.4
26	Grants	3,492,346	3,305,855	5,163,733	1,492,889	1,935,417	6,381,029	2,253,235	1,655,886	1,281,071	5,190,191	412,085	81.3
27	Social benefits	56,482,968	56,169,850	58,943,356	12,848,804	14,840,246	58,953,557	13,956,230	15,003,180	13,740,365	42,699,775	4,569,374	72.4
28	Other expense	6,077,439	5,546,433	6,223,822	1,808,307	1,686,231	7,633,426	1,383,378	1,397,651	1,513,183	4,294,212	134,946	56.3
	NET-GROSS OPERATING BALANCE (1-2)	-12,021,583	-8,046,995	-14,359,027	-1,846,383	-2,148,986	-9,875,775	-6,450,460	-125,337	736,134	-5,839,664	959,697	
31	NET ACQUISITION OF NONFINANCIAL ASSETS (311+312+313+314)	3,372,501	3,133,065	3,653,604	730,609	1,291,658	5,145,896	646,677	487,616	718,410	1,852,703	223,598	36.0
311	Fixed assets	3,213,053	2,949,185	3,223,778	691,949	1,010,477	4,514,407	463,632	535,036	693,818	1,692,486	221,526	37.5
312	Inventories	2,473	29,280	225,477	5,482	219,329	122,563	104,467	-104,358	-24,948	-24,839	-12,149	
313	Valuables	3,741	3,494	1,333	987	336	3,111	4	6	2	11	1	
314	Nonproduced assets	153,234	151,105	203,016	32,191	61,516	505,815	78,574	56,933	49,538	185,045	14,220	36.6
	NET LENDING-BORROWING (1-2-31)	-15,394,084	-11,180,059	-18,012,631	-2,576,992	-3,440,644	-15,021,671	-7,097,138	-612,953	17,724	-7,692,367	736,099	
	FINANCING (33-32)	15,394,084	11,180,059	18,012,631	2,576,992	3,440,644	15,021,671	7,097,138	612,953	-17,724	7,692,367	-736,099	
32	NET ACQUISITION OF FINANCIAL ASSETS (321+322+323)	-353,868	-165,706	14,146,115	338,389	9,946,633	-2,604,899	-5,271,565	3,075,259	-3,628,294	-5,824,600	-4,861,621	
321	Domestic	-359,208	-172,209	13,940,869	338,074	9,742,695	-2,815,912	-5,272,492	3,075,259	-3,628,294	-5,825,527	-4,861,621	
322	Foreign	5,341	6,503	205,245	315	203,938	211,013	927	0	0	927	0	
323	Monetary gold and SDRs	0	0	0	0	0	0	0	0	0	0	0	
33	NET INCURRENCE OF LIABILITIES (331+332)	15,040,216	11,014,353	32,158,746	2,915,381	13,387,277	12,416,772	1,825,573	3,688,212	-3,646,018	1,867,767	-5,597,720	
331	Domestic	6,448,390	2,958,329	10,585,751	2,907,571	1,877,827	6,309,745	3,471,526	-1,174,634	-5,012,676	-2,715,784	-5,549,196	
332	Foreign	8,591,826	8,056,024	21,572,995	7,810	11,509,450	6,107,027	-1,645,954	4,862,846	1,366,658	4,583,551	-48,524	

Source: Ministry of Finance

MEASURES OF CONSOLIDATED CENTRAL GOVERNMENT DEFICIT/SURPLUS
TABLE 18A: OPERATING BALANCE AND PRIMARY OPERATING BALANCE (000 HRK)

	Revenues (1)	Expense (2)	Operating balance	Interest payments (24)	Primary operating balance
	(1)	(2)	(3) 1-2	(4)	(5) 3+4
IX	8,744,160	9,895,756	-1,151,596	1,304,134	152,538
X	10,610,474	9,843,556	766,918	374,861	1,141,779
XI	9,643,451	9,304,204	339,247	624,914	964,162
XII	9,276,501	11,272,047	-1,995,546	776,605	-1,218,941
I-XII 2012	38,274,586	40,315,562	-2,040,977	3,080,514	1,039,538
I 2013	8,297,154	10,674,886	-2,377,732	1,310,610	-1,067,122
II	8,445,808	9,068,150	-622,341	386,032	-236,309
III	8,947,729	11,354,331	-2,406,603	1,230,066	-1,176,537
IV	9,702,638	9,908,440	-205,802	737,502	531,700
V	8,583,431	10,609,629	-2,026,198	659,008	-1,367,190
VI	9,779,520	12,504,503	-2,724,983	364,053	-2,360,930
VII	9,822,098	10,391,678	-569,581	1,216,859	647,278
VIII	8,934,975	9,440,951	-505,975	762,170	256,194
IX	9,691,705	10,462,532	-770,827	1,306,581	535,754
X	10,032,444	10,498,967	-466,524	652,986	186,462
XI	9,244,425	9,965,895	-721,471	585,095	-136,375
XII	10,569,205	11,530,197	-960,992	474,281	-486,711
I-XII 2013	112,051,132	126,410,159	-14,359,027	9,685,243	-4,673,784
I 2014	9,291,166	11,082,330	-1,791,164	1,388,637	-402,526
II	8,026,058	10,644,952	-2,618,895	501,918	-2,116,977
III	8,453,045	10,493,447	-2,040,402	1,253,736	-786,667
IV	10,279,024	10,163,278	115,747	949,997	1,065,744
V	8,525,640	10,845,655	-2,320,016	685,361	-1,634,655
VI	12,795,189	10,716,258	2,078,932	422,010	2,500,942
VII	10,515,632	11,134,463	-618,831	1,829,302	1,210,471
VIII	9,762,549	9,367,281	395,268	218,216	613,484
IX	10,854,344	9,894,647	959,697	1,273,179	2,232,876
I-IX 2014	88,502,647	94,342,311	-5,839,664	8,522,356	2,682,692

MEASURES OF CONSOLIDATED CENTRAL GOVERNMENT DEFICIT/SURPLUS

TABLE 18B: NET LENDING/BORROWING (000 HRK)

	Operating balance	Net acquisition of nonfinancial assets (31)	Net lending/borrowing*	Financing (33-32)	Net acquisition of financial assets (32)	Net incurrence of liabilities (33)
	(1)	(2)	(3) 1-2	(4) 6-5	(5)	(6)
IX	-1,151,596	233,412	-1,385,008	1,385,008	-2,176,434	-791,426
X	766,918	359,248	407,670	-407,670	1,339,343	931,673
XI	339,247	362,127	-22,880	22,880	97,858	120,738
XII	-1,995,546	928,162	-2,923,708	2,923,708	-2,928,193	-4,486
I-XII 2012	-2,040,977	1,882,949	-3,923,925	3,923,925	-3,667,426	256,499
I 2013	-2,377,732	317,122	-2,694,854	2,694,854	-194,933	2,499,921
II	-622,341	160,376	-782,717	782,717	432,012	1,214,729
III	-2,406,603	303,369	-2,709,972	2,709,972	-822,970	1,887,002
IV	-205,802	240,455	-446,256	446,256	7,750,518	8,196,774
V	-2,026,198	201,578	-2,227,776	2,227,776	-1,904,397	323,379
VI	-2,724,983	408,437	-3,133,420	3,133,420	-1,399,136	1,734,284
VII	-569,581	247,893	-817,474	817,474	2,863,223	3,680,697
VIII	-505,975	229,111	-735,086	735,086	-1,396,714	-661,629
IX	-770,827	253,605	-1,024,432	1,024,432	-1,128,120	-103,688
X	-466,524	517,638	-984,162	984,162	-29,781	954,381
XI	-721,471	291,248	-1,012,719	1,012,719	9,242,948	10,255,667
XII	-960,992	482,772	-1,443,764	1,443,764	733,465	2,177,229
I-XII 2013	-14,359,027	3,653,604	-18,012,631	18,012,631	14,146,115	32,158,746
I 2014	-1,791,164	222,889	-2,014,052	2,014,052	-1,601,306	412,747
II	-2,618,895	144,893	-2,763,788	2,763,788	1,157,142	3,920,930
III	-2,040,402	278,896	-2,319,298	2,319,298	-4,827,401	-2,508,104
IV	115,747	149,864	-34,117	34,117	-3,987,697	-3,953,580
V	-2,320,016	154,736	-2,474,752	2,474,752	7,078,406	9,553,157
VI	2,078,932	183,017	1,895,915	-1,895,915	-15,450	-1,911,365
VII	-618,831	228,628	-847,459	847,459	369,291	1,216,751
VIII	395,268	266,184	129,084	-129,084	864,036	734,952
IX	959,697	223,598	736,099	-736,099	-4,861,621	-5,597,720
I-IX 2014	-5,839,664	1,852,703	-7,692,367	7,692,367	-5,824,600	1,867,767

* Deficit/surplus according to the GFS 2001 methodology

Source: Ministry of Finance

TABLE 19: LOCAL GOVERNMENT TRANSACTIONS (THE LARGEST 53 UNITS)

	(000 HRK)	2011	2012	2013	VII - IX 2013	X - XII 2013	I - III 2014	IV - VI 2014	VII - IX 2014	I - IX 2014
1	REVENUE (11+12+13+14)	14,763,088	15,035,185	15,881,175	3,985,363	4,271,741	3,875,037	3,883,074	4,051,778	11,809,889
11	Taxes (111+113+114+115+116)	8,805,856	9,423,857	11,446,693	2,562,592	4,179,143	2,781,509	2,874,096	2,921,509	8,577,114
111	Taxes of income, profits and capital gains	7,965,284	8,606,644	8,953,357	2,264,831	2,296,242	2,280,163	2,280,163	2,230,360	6,788,863
113	Taxes on property	404,927	1,888,472	1,888,472	114,823	1,542,052	420,771	471,530	471,709	1,364,010
114	Taxes on goods and services (1141+1142+1144+1145+1146)	392,941	402,483	594,962	180,330	339,165	80,076	120,750	217,391	418,217
1141	General taxes on goods and services (11411+11412)	51,405	55,378	80,982	30,450	24,341	14,373	16,371	29,616	60,360
11411	Value-added taxes	0	0	0	0	0	0	0	0	0
11412	Sales taxes	51,405	55,378	80,982	30,450	24,341	14,373	16,371	29,616	60,360
1142	Excises	0	0	0	0	0	0	0	0	0
115	Taxes on international trade and transactions	0	0	0	0	0	0	0	0	0
116	Other taxes	10,075	9,804	9,902	2,608	1,685	2,322	1,654	2,049	6,024
12	Social contributions	0	0	0	0	0	0	0	0	0
13	Grants (131+132+133)	2,122,230	1,798,058	2,080,283	458,237	466,003	614,553	460,245	539,396	1,614,194
131	From foreign governments	549	11	2,898	15	2,879	12	211	0	223
132	From international organizations	8,814	23,687	30,516	2,445	11,816	4,560	9,146	53,499	67,205
133	From other general government units	2,112,867	1,774,361	2,046,869	455,777	451,308	609,981	450,888	485,897	1,546,766
14	Other revenue (141+142+143+144+145)	3,835,003	3,813,270	2,354,200	964,533	-373,405	478,975	548,733	590,873	1,618,581
141	Property income	886,337	921,297	892,158	231,902	236,335	195,392	228,917	249,996	674,305
142	Sales of goods and services	2,684,869	2,509,775	953,003	643,197	-881,140	227,965	261,906	282,143	772,014
143	Fines, penalties, and forfeits	54,327	71,122	22,692	7,104	8,758	6,095	11,410	7,088	24,593
144	Voluntary transfers other than grants	33,759	55,680	99,677	20,331	45,784	7,538	19,870	19,870	33,735
145	Miscellaneous and unidentified revenue	175,710	255,396	386,670	62,000	216,859	41,986	40,172	31,776	113,934
2	EXPENSE (21+22+24+25+26+27+28)	12,661,547	13,269,948	13,860,755	3,185,416	3,911,781	3,308,565	3,379,588	3,216,319	9,904,472
21	Compensation of employees (211+212)	3,604,127	3,717,421	3,678,957	978,198	954,052	942,629	960,819	937,402	2,840,850
211	Wages and salaries	3,088,997	3,210,747	3,191,714	845,202	822,010	820,253	825,430	802,757	2,448,440
212	Social contributions	515,130	506,675	487,242	132,996	132,043	122,376	135,389	134,645	392,410
22	Use of goods and services	4,998,530	5,228,358	5,381,866	1,117,754	1,511,799	1,384,420	1,329,369	1,239,002	3,952,791
24	Interest	126,181	134,863	112,617	38,171	18,812	30,464	19,981	78,382	128,827
25	Subsidies	1,043,625	1,037,691	1,179,666	260,021	404,854	261,689	261,793	248,877	772,359
26	Grants	291,279	313,289	412,553	74,855	182,709	47,450	107,055	107,055	223,810
27	Social benefits	652,601	710,944	916,056	164,958	257,742	249,080	225,874	168,721	643,675
28	Other expense	1,945,205	2,127,383	2,179,040	551,459	581,813	392,834	512,446	436,880	1,342,160
	NET-GROSS OPERATING BALANCE (1-2)	2,101,541	1,765,237	2,020,421	799,946	359,960	566,472	503,486	835,459	1,905,417
31	NET ACQUISITION OF NONFINANCIAL ASSETS (311+312+313+314)	1,671,392	1,440,588	1,610,529	441,465	451,618	393,347	343,455	314,356	1,051,158
311	Fixed assets (311,1-311,2)	1,642,846	1,427,353	1,791,997	431,862	609,875	387,421	342,387	307,204	1,037,012
311,1	acquisitions: fixed assets	1,880,738	1,587,482	1,929,796	464,169	639,224	426,689	373,593	345,839	1,146,120
311,2	disposals: fixed assets	237,892	160,129	137,800	32,307	29,348	39,268	31,205	38,635	109,108
312	Inventories	0	0	0	0	0	0	0	0	0
313	Valuables (313,1-313,2)	146	93	909	37	40	10	0	17	27
313,1	acquisitions: valuables	146	93	910	37	40	10	0	17	27
313,2	disposals: valuables	0	0	1	1	0	0	0	0	0
314	Nonproduced assets (314,1-314,2)	28,400	13,142	-182,377	9,567	-158,297	5,917	1,068	7,135	14,119
314,1	acquisitions: nonproduced assets	243,344	146,075	168,014	74,449	39,551	23,575	29,357	34,720	87,652
314,2	disposals: nonproduced assets	214,945	132,933	350,392	64,882	197,848	17,659	28,290	27,585	73,533
	NET LENDING-BORROWING (1-2-31)	430,149	324,649	409,892	358,481	-91,658	173,125	160,031	521,103	854,259
	FINANCING (33-32)	-430,149	-324,649	-409,892	-358,481	91,658	-173,125	-160,031	-521,103	-854,259
32	NET ACQUISITION OF FINANCIAL ASSETS (321+322+323)	440,757	247,184	159,538	193,048	-24,224	104,578	60,606	336,001	501,185
321	Domestic	440,757	247,184	159,538	193,048	-24,224	104,578	60,606	336,001	501,185
322	Foreign	0	0	0	0	0	0	0	0	0
323	Monetary gold and SDRs	0	0	0	0	0	0	0	0	0
33	NET INCURRENCE OF LIABILITIES (331+332)	10,608	-77,465	-250,354	-165,433	67,434	-68,547	-99,425	-185,102	-353,074
331	Domestic	17,113	-71,266	-244,872	-161,308	68,791	-67,143	-98,028	-185,102	-350,272
332	Foreign	-6,505	-6,199	-5,482	-4,124	-1,358	-1,405	-1,398	0	-2,802

Source: Ministry of Finance

TABLE 20: CONSOLIDATED GENERAL GOVERNMENT BY ECONOMIC CATEGORY

	(000 HRK)	2011	2012	2013	VII - IX 2013	X - XII 2013	I - III 2014	IV - VI 2014	VII - IX 2014	I - IX 2014
1	REVENUE (11+12+13+14)	123,024,529	126,131,604	125,878,640	31,978,364	33,659,708	29,029,817	35,016,411	34,691,771	98,737,999
11	Taxes (111+113+114+115+116)	70,228,042	74,117,755	74,491,639	18,558,533	20,585,481	16,839,534	18,410,487	20,611,402	55,861,423
111	Taxes of income, profits and capital gains	16,560,799	17,573,511	16,691,498	4,279,031	4,580,334	4,370,668	4,042,035	3,523,399	11,936,102
113	Taxes on property	886,046	802,663	2,350,786	215,148	1,669,126	512,712	565,997	565,471	1,644,180
114	Taxes on goods and services (1141+1142+1144+1145+1146)	50,637,006	53,607,502	53,944,506	13,842,319	14,188,289	11,765,953	13,609,844	16,362,746	41,738,543
1141	General taxes on goods and services (11411+11412)	37,899,231	40,834,243	40,469,361	9,782,258	10,396,060	8,785,397	10,146,531	11,882,598	30,814,526
11411	Value-added taxes	37,718,154	40,652,023	40,253,061	9,717,441	10,334,088	8,733,883	10,092,280	11,814,268	30,640,431
11412	Sales taxes	181,077	182,220	216,300	64,817	61,972	51,514	54,251	68,330	174,095
1142	Excises	11,215,054	11,206,489	11,682,936	3,619,121	3,082,003	2,601,521	3,072,390	4,015,752	9,689,662
115	Taxes on international trade and transactions	1,766,356	1,754,364	1,159,371	152,026	72,470	119,993	117,964	83,655	321,612
116	Other taxes	377,836	379,715	345,478	70,009	75,263	70,210	74,645	76,131	220,986
12	Social contributions	38,605,067	37,845,871	37,149,263	9,532,788	9,468,162	9,032,710	12,683,411	10,083,954	31,800,075
13	Grants	880,441	995,042	1,772,879	582,750	668,926	184,330	1,083,340	415,242	1,682,912
14	Other revenue	13,310,980	13,172,936	12,464,859	3,304,293	2,937,138	2,973,242	2,839,173	3,581,173	9,393,589
2	EXPENSE (21+22+24+25+26+27+28)	132,944,571	132,413,362	138,217,247	33,024,800	35,448,735	34,913,806	34,638,262	33,120,178	102,672,246
21	Compensation of employees (211+212)	35,608,225	35,381,024	34,443,258	8,614,794	8,587,394	8,557,522	8,517,541	8,522,468	25,597,531
211	Wages and salaries	30,250,759	30,364,799	29,744,383	7,432,736	7,419,551	7,401,780	7,276,104	7,240,817	21,918,701
212	Social contributions	5,357,466	5,016,225	4,698,875	1,182,058	1,167,843	1,155,741	1,241,438	1,281,651	3,678,830
22	Use of goods and services	15,362,330	14,995,799	15,461,004	3,562,931	4,688,902	3,340,625	3,576,566	3,486,910	10,404,102
24	Interest	7,570,804	8,848,842	9,797,860	3,323,781	1,731,174	3,174,755	2,077,348	3,399,079	8,651,183
25	Subsidies	7,606,056	6,800,995	6,730,232	1,037,801	1,415,215	2,174,185	2,068,980	956,978	5,200,144
26	Grants	1,638,943	1,832,092	3,522,619	1,111,967	1,660,019	1,685,196	1,258,674	895,594	3,839,464
27	Social benefits	57,135,569	56,880,795	59,859,412	13,013,761	15,097,987	14,205,310	15,229,054	13,909,086	43,343,450
28	Other expense	8,022,645	7,673,816	8,402,862	2,359,766	2,268,044	1,776,212	1,910,097	1,950,063	5,636,372
	NET-GROSS OPERATING BALANCE (1-2)	-9,920,042	-6,281,758	-12,338,607	-1,046,436	-1,789,027	-5,883,988	378,149	1,571,593	-3,934,247
31	NET ACQUISITION OF NONFINANCIAL ASSETS (311+312+313+314)	5,043,893	4,573,653	5,264,132	1,172,074	1,743,276	1,040,024	831,071	1,032,766	2,903,861
311	Fixed assets	4,855,899	4,376,538	5,015,774	1,123,811	1,620,352	851,053	877,423	1,001,022	2,729,498
312	Inventories	2,473	29,280	225,477	5,482	219,329	104,467	-104,358	-24,948	-24,839
313	Valuables	3,888	3,587	2,242	1,024	376	14	6	19	38
314	Nonproduced assets	181,634	164,247	20,639	41,757	-96,781	84,490	58,000	56,673	199,164
	NET LENDING-BORROWING (1-2-31)	-14,963,935	-10,855,411	-17,602,739	-2,218,511	-3,532,302	-6,924,013	-452,922	538,827	-6,838,108
	FINANCING (33-32)	14,963,935	10,855,411	17,602,739	2,218,511	3,532,302	6,924,013	452,922	-538,827	6,838,108
32	NET ACQUISITION OF FINANCIAL ASSETS (321+322+323)	87,221	58,456	14,305,668	531,440	9,922,409	-5,173,085	3,133,441	-3,298,814	-5,338,458
321	Domestic	81,880	51,953	14,100,423	531,125	9,718,471	-5,174,012	3,133,441	-3,298,814	-5,339,385
322	Foreign	5,341	6,503	205,245	315	203,938	927	0	0	927
323	Monetary gold and SDRs	0	0	0	0	0	0	0	0	0
33	NET INCURRENCE OF LIABILITIES (331+332)	15,051,156	10,913,866	31,908,407	2,749,951	13,454,711	1,750,928	3,586,363	-3,837,641	1,499,650
331	Domestic	6,465,835	2,864,041	10,340,894	2,746,266	1,946,619	3,398,286	-1,275,086	-5,204,299	-3,081,099
332	Foreign	8,585,321	8,049,825	21,567,513	3,686	11,508,092	-1,647,358	4,861,449	1,366,658	4,580,749

Source: Ministry of Finance

TABLE 21: CONSOLIDATED GENERAL GOVERNMENT ACCORDING TO GOVERNMENT LEVEL

	(000 HRK)	2011	2012	2013	VII - IX 2013	X - XII 2013	I - III 2014	IV - VI 2014	VII - IX 2014	I - IX 2014
1	REVENUE (A+B+C)	123,024,529	126,131,604	125,878,640	31,978,364	33,659,708	29,029,817	35,016,411	34,691,771	98,737,999
	A) Budgetary Central Government	107,067,244	109,558,431	108,581,764	27,564,651	28,846,174	24,990,783	30,620,812	29,989,938	85,601,533
	B) Extrabudgetary Users (1+...+7)	3,307,063	3,312,348	3,462,570	884,127	993,102	773,978	963,413	1,135,952	2,873,343
	1. Croatian Waters	1,584,711	1,574,858	1,714,897	425,194	501,983	357,202	440,587	608,317	1,406,106
	2. Fund for Environmental Protection and Energy Efficiency	1,069,043	1,049,285	1,032,526	267,428	300,782	235,099	273,539	310,178	818,816
	3. Croatian Roads Ltd.	57,462	55,417	51,460	9,104	19,360	15,392	10,855	13,978	40,225
	4. State Agency for Deposit Insurance and Bank Rehabilitation	552,819	576,101	597,248	165,079	153,334	151,575	223,232	180,919	555,726
	5. Croatian Privatization Fund	1,892	-	-	-	-	-	-	-	-
	6. Agency for Management of the Public Property	41,136	56,687	49,247	17,322	451	-	-	-	-
	7. Restructuring and Sale Center	-	-	17,192	-	17,192	14,710	15,200	22,560	52,470
	C) Budgetary Local Government	12,650,221	13,260,825	13,834,306	3,529,586	3,820,433	3,265,056	3,432,186	3,565,881	10,263,123
2	EXPENSE (A+B+C)	132,944,571	132,413,362	138,217,247	33,024,800	35,448,735	34,913,806	34,638,262	33,120,178	102,672,246
	A) Budgetary Central Government	116,163,322	115,318,008	119,880,768	28,423,126	30,128,201	30,886,446	30,405,101	28,671,328	89,962,875
	B) Extrabudgetary Users (1+...+7)	4,151,516	3,838,098	4,482,523	1,416,258	1,415,551	724,303	869,201	1,239,166	2,832,670
	1. Croatian Waters	1,436,668	1,439,851	1,455,114	385,670	447,373	211,879	387,095	378,106	977,080
	2. Fund for Environmental Protection and Energy Efficiency	884,255	933,983	834,970	238,023	263,953	195,249	212,437	302,100	709,786
	3. Croatian Roads Ltd.	1,320,918	1,276,972	1,478,081	404,774	454,808	298,103	242,755	373,971	914,829
	4. State Agency for Deposit Insurance and Bank Rehabilitation	408,867	89,460	538,282	318,229	210,653	5,453	6,952	160,159	172,564
	5. Croatian Privatization Fund	16,161	-	-	-	-	-	-	-	-
	6. Agency for Management of the Public Property	84,648	97,832	138,861	69,562	1,549	-	-	-	-
	7. Restructuring and Sale Center	-	-	37,215	-	37,215	13,619	19,962	24,830	58,411
	C) Budgetary Local Government	12,629,732	13,257,257	13,853,957	3,185,416	3,904,983	3,303,057	3,363,960	3,209,684	9,876,701
	NET-GROSS OPERATING BALANCE (1-2)	-9,920,042	-6,281,758	-12,338,607	-1,046,436	-1,789,027	-5,883,988	378,149	1,571,593	-3,934,247
31	NET ACQUISITION OF NONFINANCIAL ASSETS	5,043,893	4,573,653	5,264,132	1,172,074	1,743,276	1,040,024	831,071	1,032,766	2,903,861
	Acquisition (A+B+C)	5,876,148	5,175,902	6,040,600	1,342,234	2,041,600	1,224,067	1,069,256	1,206,964	3,500,287
	A) Budgetary Central Government	1,485,978	1,107,982	1,564,011	228,156	805,354	414,956	290,441	291,422	996,819
	B) Extrabudgetary users	2,265,942	2,334,270	2,377,872	575,423	557,432	358,838	375,865	534,966	1,269,669
	C) Budgetary Local Government	2,124,228	1,733,651	2,098,721	538,655	678,814	402,273	380,576	380,576	1,233,799
	Disposals (A+B+C)	832,255	602,250	776,472	170,159	298,324	184,043	238,185	174,198	596,426
	A) Budgetary Central Government	347,008	278,356	259,494	63,006	68,430	125,364	178,102	107,673	411,139
	B) Extrabudgetary users	32,411	30,831	28,786	9,964	2,698	1,753	588	305	2,646
	C) Budgetary Local Government	452,836	293,063	488,192	97,190	227,196	56,926	59,495	66,220	182,641
	NET LENDING-BORROWING (1-2-31)	-14,963,935	-10,855,411	-17,602,739	-2,218,511	-3,532,302	-6,924,013	-452,922	538,827	-6,838,108
	FINANCING (33-32)	14,963,935	10,855,411	17,602,739	2,218,511	3,532,302	6,924,013	452,922	-538,827	6,838,108
32	NET ACQUISITION OF FINANCIAL ASSETS (321+322+323)	87,221	58,456	14,305,668	531,440	9,922,409	-5,173,085	3,133,441	-3,298,814	-5,338,458
321	Domestic (A+B+C)	81,880	51,953	14,100,423	531,125	9,718,471	-5,174,012	3,133,441	-3,298,814	-5,339,385
	A) Budgetary Central Government	-817,680	-674,443	13,792,673	415,797	9,380,650	-5,577,478	2,987,556	-4,308,004	-6,897,926
	B) Extrabudgetary users	458,803	479,212	148,212	-77,720	362,045	298,888	85,167	673,189	1,057,244
	C) Budgetary Local Government	440,757	247,184	159,538	193,048	-24,224	104,578	60,718	336,001	501,297
322	Foreign (A+B+C)	5,341	6,503	205,245	315	203,938	927	0	0	927
	A) Budgetary Central Government	5,341	6,503	205,245	315	203,938	927	0	0	927
	B) Extrabudgetary users	0	0	0	0	0	0	0	0	0
	C) Budgetary Local Government	0	0	0	0	0	0	0	0	0
323	Monetary gold and SDRs	0	0	0	0	0	0	0	0	0
33	NET INCURRENCE OF LIABILITIES (331+332)	15,051,156	10,913,866	31,908,407	2,749,951	13,454,711	1,750,928	3,586,363	-3,837,641	1,499,650
331	Domestic (A+B+C)	6,465,835	2,864,041	10,340,894	2,746,266	1,946,619	3,398,286	-1,275,086	-5,204,299	-3,081,099
	A) Budgetary Central Government	4,793,136	1,413,994	8,904,914	2,528,989	925,630	3,331,319	-1,112,984	-5,525,180	-3,306,845
	B) Extrabudgetary users	1,655,254	1,544,335	1,680,837	378,582	952,197	140,207	-61,650	512,504	591,061
	C) Budgetary Local Government	17,444	-94,288	-244,857	-161,305	68,792	-73,241	-100,452	-191,623	-365,315
332	Foreign (A+B+C)	8,585,321	8,049,825	21,567,513	3,686	11,508,092	-1,647,358	4,861,449	1,366,658	4,580,749
	A) Budgetary Central Government	8,597,227	8,125,181	21,534,837	23,702	11,463,400	-1,636,665	4,841,029	1,375,975	4,580,340
	B) Extrabudgetary users	-5,401	-69,157	38,158	-15,892	46,050	-9,289	21,817	-9,317	3,211
	C) Budgetary Local Government	-6,505	-6,199	-5,482	-4,124	-1,358	-1,405	-1,398	0	-2,802

Source: Ministry of Finance

TABLE 23: CONSOLIDATED CENTRAL GOVERNMENT DOMESTIC DEBT
DOMESTIC DEBT STOCK IN 000 (30 SEPTEMBER 2014)

Debt item:	Currency	Stock	Stock/HRK	Maturity	Interest rate
Bonds - Series 07 D-19	EUR	1,000,000	7,626,267	2019	5.38%
Bonds - Series 09 D-15	EUR	350,000	2,669,193	2015	4.25%
Bonds - Series 10 D-15	HRK	5,500,000	5,500,000	2015	5.25%
Bonds - Series 12 D-17	HRK	5,500,000	5,500,000	2017	4.75%
Bonds - Series 13 D-20	HRK	5,000,000	5,000,000	2020	6.75%
Bonds - Series 14 D-20	EUR	1,000,000	7,626,267	2020	6.50%
Bonds - Series 15 D-17	HRK	4,000,000	4,000,000	2017	6.25%
Bonds - Series 16 D-16	HRK	3,500,000	3,500,000	2016	5.75%
Bonds - Series 17 D-22	EUR	1,000,000	7,626,267	2022	6.50%
Bonds - Series 18 D-18	HRK	2,750,000	2,750,000	2018	5.25%
Bonds - Series 19 D-24	EUR	1,400,000	10,676,774	2024	5.75%
Syndicated FX loan I	EUR	329,184	2,510,443	2017	4.59%
Syndicated FX loan II	EUR	193,727	1,477,411	2016	4.37%
Syndicated FX loan III	EUR	211,667	1,614,227	2016	4.49%
Other FX loans	EUR	177,333	1,352,391	2018	5.50%
Long term loan - HZZO	EUR	265,000	2,020,961	2016	4.56%
Long term loan - HZZO	HRK	922,667	922,667	2018	5.00%
Other medium and long term debt	HRK	7,448,917	7,448,917		
Medium and long term debt			79,821,784		
Treasury Bills	HRK	23,688,000	23,688,000		
Treasury Bills indexed to foreign currency	EUR	99,100	755,763		
Treasury Bills FX	EUR	700,000	5,338,387		
Other short-term debt	HRK	2,267,339	2,267,339		
Short-term debt			32,049,489		
Total debt			111,871,273		

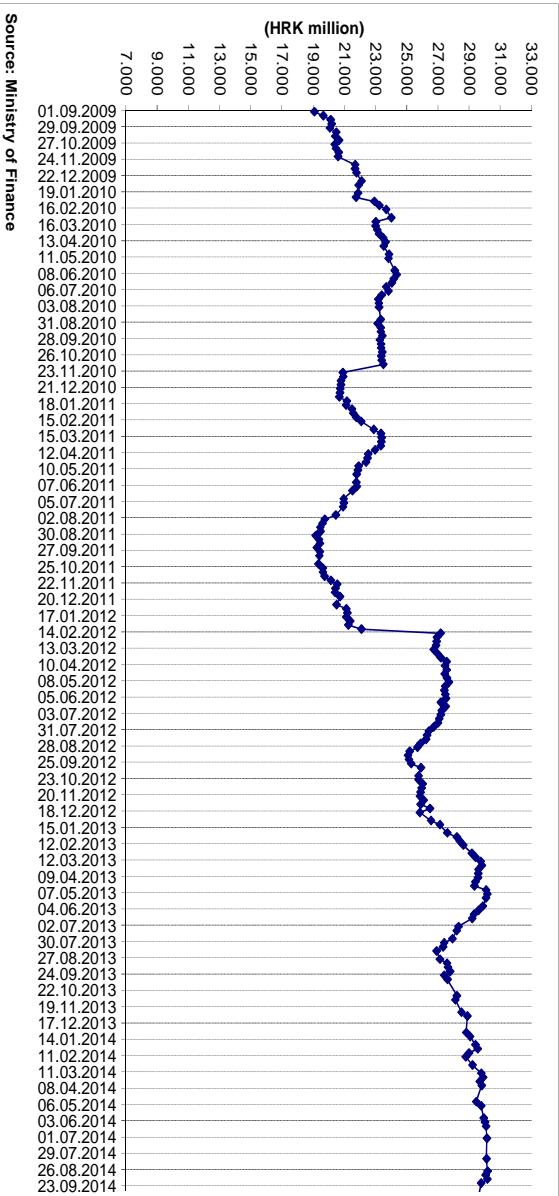
Source: Ministry of Finance

TABLE 24: RESULTS OF TREASURY BILL'S AUCTIONS HELD BY THE MINISTRY OF FINANCE

Day of Auction	91 day				182 days				364 days				91 day				364 days			
	Size (HRK)	Total bids received (HRK)	Weighted average of the bids received (HRK) / Yielding (%)	Uniform price allocation per 100 HRK (HRK) / Yielding (%)	Size (HRK)	Total bids received (HRK)	Weighted average of the bids received (HRK) / Yielding (%)	Uniform price allocation per 100 HRK (HRK) / Yielding (%)	Size (HRK)	Total bids received (HRK)	Weighted average of the bids received (HRK) / Yielding (%)	Uniform price allocation per 100 HRK (HRK) / Yielding (%)	Size (EUR)	Total bids received (EUR)	Weighted average of the bids received (EUR) / Yielding (%)	Uniform price allocation per 100 EUR (EUR) / Yielding (%)	Size (EUR)	Total bids received (EUR)	Weighted average of the bids received (EUR) / Yielding (%)	Uniform price allocation per 100 EUR (EUR) / Yielding (%)
01.10.2013	390,000	397,000	99.755 / 0.99%	99.754 / 0.99%	105,000	107,000	99.257 / 1.50%	99.258 / 1.50%	632,000	682,000	97.744 / 2.31%	97.520 / 2.55%	5,000	5,000	99.863 / 0.55%	99.863 / 0.55%	2,000	2,000	98.964 / 1.05%	98.964 / 1.05%
29.10.2013	210,000	240,000	99.775 / 0.90%	99.776 / 0.90%	102,000	102,000	99.299 / 1.42%	99.282 / 1.45%	1,097,000	1,100,000	97.571 / 2.50%	97.520 / 2.55%	10,000	10,000	99.863 / 0.55%	99.863 / 0.55%	3,000	3,000	99.209 / 0.80%	99.209 / 0.80%
26.11.2013	271,000	271,000	99.788 / 0.85%	99.776 / 0.90%	14,000	14,000	99.342 / 1.33%	99.307 / 1.40%	1,300,000	1,660,000	97.638 / 2.43%	97.567 / 2.50%	24,000	24,000	99.868 / 0.53%	99.863 / 0.55%	1,000	1,000	99.307 / 0.70%	99.307 / 0.70%
03.12.2013	140,000	140,000	99.802 / 0.80%	99.801 / 0.80%	40,000	43,000	99.349 / 1.31%	99.356 / 1.30%	1,554,000	1,864,000	97.623 / 2.44%	97.568 / 2.50%	1,800	1,800	99.888 / 0.45%	99.888 / 0.45%				
10.12.2013	191,000	191,000	99.818 / 0.73%	99.813 / 0.75%	60,000	60,000	99.405 / 1.20%	99.405 / 1.20%	1,200,000	1,805,000	97.640 / 2.42%	97.616 / 2.45%	13,900	13,900	99.890 / 0.44%	99.888 / 0.45%	1,500	3,000	98.917 / 1.10%	99.307 / 0.70%
30.12.2013					120,000	120,000	99.434 / 1.14%	99.405 / 1.20%	812,000	1,267,000	97.686 / 2.38%	97.663 / 2.40%								
07.01.2014									675,000	1,092,000	97.752 / 2.31%	97.759 / 2.30%					500	500	99.405 / 0.60%	99.405 / 0.60%
21.01.2014									647,000	1,014,000	97.904 / 2.15%	97.949 / 2.10%					2,400	22,400	98.891 / 1.12%	99.504 / 0.50%
28.01.2014	55,000	55,000	99.854 / 0.59%	99.826 / 0.70%					744,000	744,000	98.109 / 1.93%	98.001 / 2.05%								
04.02.2014	75,000	75,000	99.842 / 0.63%	99.826 / 0.70%	70,000	70,000	99.447 / 1.12%	99.405 / 1.20%	721,000	851,000	98.014 / 2.03%	98.001 / 2.05%								
25.02.2014	55,000	55,000	99.846 / 0.62%	99.838 / 0.65%	281,000	281,000	99.428 / 1.15%	99.405 / 1.20%	1,200,000	1,565,000	98.055 / 1.99%	98.001 / 2.05%	2,000	2,000	99.900 / 0.40%	99.900 / 0.40%	10,000	20,000	99.124 / 0.89%	99.365 / 0.65%
04.03.2014	40,000	40,000	99.851 / 0.60%	99.851 / 0.60%	149,000	149,000	99.428 / 1.15%	99.405 / 1.20%	1,505,000	1,790,000	98.057 / 1.99%	98.044 / 2.00%					2,300	12,300	98.983 / 1.03%	99.454 / 0.55%
11.03.2014					211,000	211,000	99.420 / 1.17%	99.405 / 1.20%	1,591,000	1,591,000	98.084 / 1.96%	98.044 / 2.00%					1,500	1,500	99.553 / 0.45%	99.553 / 0.45%
18.03.2014									671,000	721,000	98.055 / 1.99%	98.044 / 2.00%								
01.04.2014	15,000	15,000	99.867 / 0.53%	99.863 / 0.55%	25,000	25,000	99.435 / 1.14%	99.407 / 1.20%	913,000	913,000	98.081 / 1.96%	98.044 / 2.00%	1,000	1,000	99.888 / 0.45%	99.888 / 0.45%	2,000	2,000	99.628 / 0.37%	99.603 / 0.40%
29.04.2014					50,000	50,000	99.438 / 1.13%	99.405 / 1.20%	1,008,000	1,008,000	98.092 / 1.95%	98.044 / 2.00%					500	500	99.603 / 0.40%	99.603 / 0.40%
06.05.2014					25,000	25,000	99.456 / 1.10%	99.454 / 1.10%	877,000	937,000	98.053 / 1.99%	98.044 / 2.00%					0	5,000	98.769 / 1.25%	
27.05.2014									645,000	665,000	98.075 / 1.97%	98.044 / 2.00%					28,000	28,000	99.509 / 0.50%	99.504 / 0.50%
03.06.2014					120,000	120,000	99.463 / 1.08%	99.455 / 1.10%	1,163,000	1,163,000	98.066 / 1.98%	98.044 / 2.00%								
10.06.2014	10,000	10,000	99.857 / 0.57%	99.851 / 0.60%					500,000	759,000	98.069 / 1.97%	98.046 / 2.00%								
01.07.2014					20,000	20,000	99.504 / 1.00%	99.504 / 1.00%	396,000	1,546,000	98.072 / 1.97%	98.097 / 1.95%								
26.08.2014	20,000	20,000	99.900 / 0.40%	99.900 / 0.40%	160,000	160,000	99.505 / 1.00%	99.505 / 1.00%	1,200,000	2,344,000	98.142 / 1.90%	98.140 / 1.90%	22,000	53,000	99.898 / 0.41%	99.900 / 0.40%	10,800	30,800	99.180 / 0.83%	99.405 / 0.60%
02.09.2014	20,000	70,000	99.865 / 0.54%	99.900 / 0.40%	220,000	370,000	99.486 / 1.04%	99.504 / 1.00%	933,000	1,997,000	98.205 / 1.83%	98.237 / 1.80%	6,500	6,500	99.901 / 0.40%	99.900 / 0.40%	1,000	1,000	99.454 / 0.55%	99.454 / 0.55%
09.09.2014	60,000	60,000	99.900 / 0.40%	99.900 / 0.40%	50,000	350,000	99.508 / 0.99%	99.529 / 0.95%	934,000	1,871,000	98.313 / 1.72%	98.347 / 1.69%	3,100	3,100	99.900 / 0.40%	99.900 / 0.40%	1,000	1,000	99.454 / 0.55%	99.454 / 0.55%
30.09.2014	10,000	10,000	99.900 / 0.40%	99.900 / 0.40%	120,000	120,000	99.581 / 0.84%	99.553 / 0.90%	546,000	846,000	98.439 / 1.59%	98.386 / 1.64%								

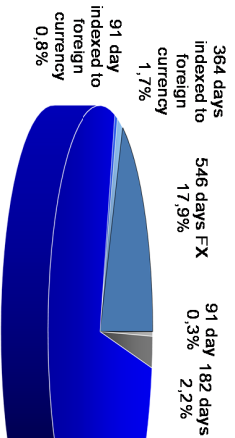
Source: Ministry of Finance

T-Bills outstanding debt



Source: Ministry of Finance

Structure of outstanding T-Bills on 30 September 2014



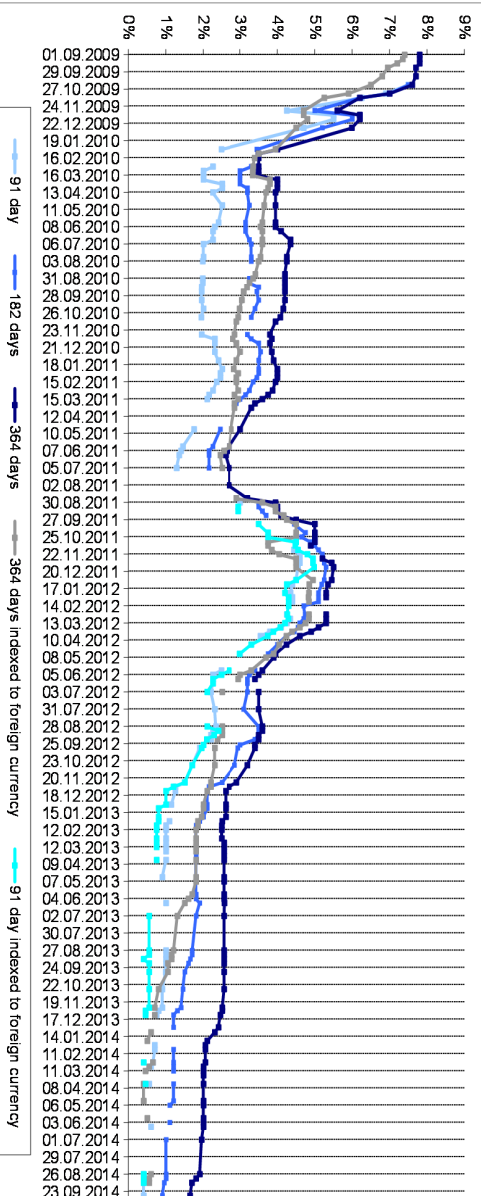
Source: Ministry of Finance

Structure of bids accepted according to buyers, September 2014



Source: Ministry of Finance

Annual yield on T-Bills



Source: Ministry of Finance

NOTES ON METHODOLOGY

General note for the tables from 2 to 21:

The data are on the cash basis.

Table 2: Budgetary Central Government Revenues

Budgetary Central Government according to the GFS 2001 methodology is equivalent to the **State Budget** in terms of the Budget Act which entered into force on January 1, 2009. (Official Gazette No. 87/2008).

Budgetary Central Government revenue (1), according to the International Monetary Fund's GFS 2001 methodology (Government Finance Statistics), is an increase in net worth resulting from a financial transaction in relation to Government. According to this methodology, Budgetary Central Government revenues are composed of main categories as follows: taxes (11), social contributions (12), grants (13) and other revenue (14).

Taxes (11) are compulsory transfers to the Government sector, composed of following categories:

- Taxes on income, profits and capital gains (111) are attributed either to individuals (1111) who pay income tax or to corporations and other enterprises (1112) that pay profit tax. In cases when the information needed to determine to which of the mentioned categories taxes should be attributed is not available, the taxes are treated as not allocable (1113).
- Taxes on payroll and workforce (112) consist of taxes that are collected from employers or self-employed persons, either as a proportion of payroll size or as a fixed amount per person, and are not earmarked for social security schemes. Since this category doesn't exist in the tax system of the Republic of Croatia, it is not published in the report on Budgetary Central Government Revenues.
- Taxes on property (113) include taxes on the use, ownership or transfer of wealth. According to GFS 2001 methodology, it encompasses recurrent taxes on immovable property (1131), recurrent taxes on estate, inheritance and gifts (1133) as well as taxes on financial and capital transactions (1134). In the report on Budgetary Central Government Revenues, this category consists only of taxes on property.
- Taxes on goods and services (114) include all taxes levied on the production, extraction, sale, transfer, leasing or delivery of goods and rendering of services. Taxes on goods and services include: general taxes on goods and services (1141) that are divided into value added tax (11411), sales tax (11412) and turnover and other general taxes on goods and services (11413); excises (1142); profits on fiscal monopolies (1143); taxes on specific services (1144); taxes on use of goods and on permission to use goods or perform activities (1145); and other taxes on goods and services (1146). Taxes on specific services (1144) include all taxes levied on payments for specific services, such as taxes on transport charges, insurance premiums, banking services, entertainment and advertising charges. Taxes on use of goods and on permission to use goods or perform activities (1145) include various business and professional licences.
- Taxes on international trade and transactions (115) include customs and other import duties collected on goods entering the country or services delivered by non-residents to residents. This item also includes taxes on exports, profits on export or import monopolies, exchange profits, exchange taxes and other taxes on international trade and transactions.
- Other taxes (116) cover revenue from taxes levied predominantly on bases other than those described under previous tax headings. It also includes revenue from unidentified taxes that can't be classified in one of the mentioned tax categories.

Social contributions (12), within the tax system of the Republic of Croatia, encompass relevant contributions to social security schemes (121), which are classified according to source of contribution as follows:

- Employee contributions (1211) are either paid directly by employees or are deducted from employees' wages and salaries and transferred on their behalf by the employer.
- Employer contributions (1212) are paid directly by employers on behalf of their employees.
- Self-employed or non-employed contributions (1213) are paid by contributors who are not employees.
- Unallocable contributions (1214) are those contributions whose source cannot be determined (For 2002, most data in the table falls into this category because at the time the same contributions were paid partly by the employee and partly by the employer and it was impossible to separate the two).

Grants (13) are non-compulsory current or capital transfers received by a government unit from other general government units, foreign governments or international organization.

Other revenues (14) are composed of property income (141), sales of goods and services (142), fines, penalties and forfeits (143), voluntary transfers other than grants (144) and miscellaneous and unidentified revenue (145).

Property income (141) includes a variety of forms of revenue that government units earn from financial and/or nonproduced assets that they own: interest (1411), dividends (1412), withdrawals from income of quasi-corporations (1413), property income from insurance policyholders (1414) and rent (1415), which is property income received from the lease of land and other naturally occurring assets. Revenues from sales of goods and services (142) refer to sales by market establishments (1421) owned by government which carry out only a single productive activity or the principal productive activity accounts for most of the value added; then administrative fees (1422) and incidental sales by non-market establishments (1423).

Voluntary transfers other than grants (144) include gifts and voluntary donations from individuals, private non-profit institutions, nongovernmental foundations, corporations and any other source other than governments and international organizations.

As of 1st of July 2001, Budgetary Central Government revenues include pension insurance contributions, which were, prior to that revenue of Croatian Pension Insurance Administration. Also, as of 1st of January 2002, health insurance contributions and employment contributions, which were prior to that revenues of the Croatian Employment Service and Croatian Institute for Health Insurance, are included in the Budgetary Central Government. All mentioned revenues are classified according to the GFS 2001 methodology.

By the end of 2001, two new extrabudgetary funds were founded: the Regional Development Fund as well as the Development and Employment Fund. They took over some of the Budgetary Central Government activities as well as the receipts from privatisation of public enterprises. As of 1st of January 2003, these funds have been included in the coverage of the Budgetary Central Government.

Since 2007 all the transactions of Croatian Pension Insurance Administration, Croatian Institute for Health Insurance and Croatian Employment Service) have been included in the Budgetary Central Government.

Table 3: Budgetary Central Government Expense

Budgetary Central Government Expense (2) is, according to the International Monetary Fund's GFS 2001 (Government Finance Statistics) methodology, a decrease in net worth resulting from a financial transaction in relation to Government. According to this methodology, Budgetary Central Government expenses are composed of the following main categories: compensation of employees (21), use of goods and services (22), consumption of fixed capital (23), interest (24), subsidies (25), grants (26), social benefits (27) and other expense (28).

Compensation of employees (21) is the total remuneration, in cash or in kind, payable to a government employee. It includes both wages and salaries (211) and social contributions (212) made on behalf of employees to social insurance schemes.

Use of goods and services (22) represents the total value of goods and services purchased by government sector for use in a production process or acquired for resale less the net change in inventories of those goods and services.

Consumption of fixed capital (23) is the decline during the course of an accounting period in the value of fixed assets, as a result of physical deterioration, normal obsolescence or normal accidental damage. Namely, consumption of fixed capital is not included in budgetary reports because such data are still not available for the report purposes, according to the GFS 2001 methodology.

Interest (24) is an expense resulting from a government unit borrowing funds from another unit. Total interest payable is subdivided into interest payable to non-residents (241), interest payable to residents other than general government (242) and interest payable to other general government units (243).

Subsidies (25) are current non-repayable payments that government makes to enterprises based on the level of their production activities or the quantities or values of goods or services they produce, sell, export or import. Subsidies also include transfers to public corporations and quasi-corporations aimed to compensate for losses arising from pricing policies that reflect deliberate government economic and social policy by charging prices that are lower than the average cost of production. Subsidies are classified by recipient type: whether it is a public financial/nonfinancial enterprise (251) or private financial/nonfinancial enterprise (252).

Grants (26) are non-compulsory current or capital transfers, in cash or kind, classified by type of recipients: grants to foreign government (261), grants to international organizations (262) and grants to other general government units (263).

Social benefits (27) are defined as current transfers, classified according to the type of scheme governing their payment:

- Social security benefits (271) are social benefits payable to households by social security schemes. Typical social security benefits in cash include sickness and invalidity benefits, maternity allowances, children's or family allowances, unemployment benefits, retirement and survivors' pensions. In-kind benefits from insurance include goods and services acquired on the market for the household, or reimbursement for household expenses for that purpose. Medical or dental treatments, surgery, hospital accommodation, pharmaceutical products, home care and similar goods and services fall into this category.
- Social assistance benefits (272) are transfers payable to households and aimed to cover the same needs as social insurance benefits but that are not subject to social insurance schemes. Social assistance benefits may be paid in cases when no social insurance scheme exists to cover the circumstances in question, when households do not participate in existing social insurance schemes, or when social insurance benefits are inadequate to meet particular needs. In the Republic of Croatia, a larger part of this category refers to child allowances, various aids to families and households, disabled persons, etc. Grants in kind include co-financing of transportation costs, home care, accommodation, food and other similar goods and services.
- Employer social benefits (273) are social benefits payable by government to their employees similar to social insurance schemes. In the Republic of Croatia, a major part of this category relates to severance payments.

Other expense (28) is subdivided into two main categories:

- Property expense other than interest (281) may take the form of dividends (as distributions of profits by public corporations to their shareholders or owners), withdrawals from income of quasi-corporations, property income from insurance policyholders or rent (as the expense related to the lease of land, subsoil assets and other nonproduced naturally occurring assets). Rent of land is the most important in this category.
- Miscellaneous expense (282) includes a number of current or capital transfers such as: current transfers to non-profit institutions, payments of compensation for injuries or damages caused by natural disasters or caused by general government units, scholarship, purchases of goods and services from market producers that are distributed directly to households for consumption (except social benefits), capital grants to enterprises and non-profit institutions serving households for the acquisition of nonfinancial assets or coverage of accumulated losses, capital grants to households for construction and reconstruction purposes, etc.

As of 1st of July 2001, Budgetary Central Government expense includes the expense for domestic pensions, which was prior to that expense of Croatian Pension Insurance Administration.

As of 1st of January 2002, Budgetary Central Government expense includes the expense originating from employment rights as well as expense based on health insurance, which were prior to that expenses of Croatian Employment Service and Croatian Institute for Health Insurance respectively.

As of 1st of January 2004, Budgetary Central Government expense includes the expense for foreign pensions, which was prior to that expense of Croatian Pension Insurance Administration.

All mentioned expenses are classified according to the GFS 2001 methodology.

As of 1st of January 2003, the coverage of the Budgetary Central Government is expanded by classifying Regional Development Fund and Development and Employment Fund as budget users, which were prior to that classified as extrabudgetary funds.

Since 2007 social security funds (Croatian Pension Insurance Administration, Croatian Institute for Health Insurance and Croatian Employment Service) have been included in the coverage of Budgetary Central Government.

Table 4: Transactions in Nonfinancial Assets of Budgetary Central Government

Nonfinancial assets (31) usually occur as outputs from a production process, as natural resources or as a creation of society. Depending on that, nonfinancial assets are classified as produced and nonproduced nonfinancial assets. According to GFS 2001 methodology, all assets, including nonfinancial assets, as well as liabilities are observed from several aspects using different classifications identified by different codes. Those classifications are then further subdivided in groups according to categories of assets/liabilities which are identical among classifications. Namely, GFS 2001 observes assets and liabilities from the aspects of: transactions (classification 3); gains/losses from holdings of assets and liabilities (classification 4); other flows in assets/liabilities (classification 5); and stocks (classification 6). Currently, not all the data needed to produce classifications 4, 5 and 6 are available in the Republic of Croatia. As a result, the reports include only data on transactions (code 31 for nonfinancial assets). In this sense, the following definitions and codes should be acknowledged.

Produced nonfinancial assets are composed of following components, according to GFS 2001:

- Fixed assets (311) represent produced assets that are used repeatedly or continuously in the production process for more than one year. Fixed assets are composed of three main categories:
 - buildings and structures (3111), which by the existing chart of account also includes the subgroup of construction objects;
 - machinery and equipment (3112), which by existing chart of accounts also includes the subgroup of transportation machinery as well as the subgroup of books, artworks and other art values;
 - other fixed assets (3113), which also includes cultivated assets (animal stock, plantations) as well as nonmaterial produced assets (investment in computer programs, science works etc.)

- Inventories (312) represent goods and services held by producers for sale, use in production or other use at a later date. Inventories are classified as strategic stocks (which include goods held for strategic and emergency purposes, goods held within organizations acting as market regulators as well as goods of special national interest) and other inventories (which consist of materials and supplies used in production process, work in progress, finished goods and goods for resale). Usually, those transactions appear with a small share in the budget.
- Valuables (313) are produced goods of considerable value that are acquired and held over time primarily as stores of value and not for purposes of production or consumption (precious stones, paintings, sculptures etc.).

Nonproduced nonfinancial assets (314) consist of tangible, naturally occurring assets over which ownership rights are enforced, and intangible nonproduced assets (3144) which are of social origin (patents, leasing contracts, goodwill etc.). Naturally occurring assets include land (3141), subsoil assets (3142) and other naturally occurring assets (3143), e.g. electro-magnetic frequencies.

All transactions that increase the value of a certain fixed asset are called **acquisitions**, while transactions that reduce the value of a certain category are called **disposals**. In order to record separately acquisitions and disposals, additional sub-codes are added after the code's decimal point (comma): number 1 to denote acquisitions and number 2 to denote disposals.

For example, the construction of a school building or a hospital is treated as an acquisition of fixed assets, i.e. buildings and structures (3111,1), while sales of public flats are denoted as sales of fixed assets (3111,2). Similarly, purchases of cars and computer equipment are treated as acquisitions of fixed assets, namely under machinery and equipment (3112,1) while sales of the same are denoted as sales of fixed assets (3112,2). As an exception according the GFS 2001 methodology, inventories are presented only as net changes resulting from transactions and not as gross values for acquisitions and disposals.

Table 5: Transactions in Financial Assets of Budgetary Central Government

Financial assets (32) consist of financial claims, monetary gold and special drawing rights (SDR).

Financial claims are defined as financial assets which entitles one unit (creditor) to receive one or more payments from another unit (debtor) according to the terms of the agreement. Claims can figure as claims on other units, domestic (321) or foreign (322). The classification of financial assets is primarily based upon the degree of liquidity and legal characteristics of the instruments that describe the underlying creditor-debtor relationships: currency and deposits, securities other than shares, loans, shares and other equity, insurance technical reserves, financial derivatives and other accounts receivable.

Monetary gold and SDRs are not financial claims, which mean that they are not the liability of any other unit. They do, however, provide economic benefits by serving as a store of value and they are used as a means of payment to settle financial claims and finance other types of transactions. As a result, they are, by convention, treated as financial assets.

All transactions that increase a unit's holdings of assets are labelled as acquisitions and all transactions that decrease a unit's holdings of assets are labelled as disposals. According to GFS 2001, it is customary to present only net acquisition of financial assets but here the data is presented through acquisitions and disposal due to transparency. The same coding system described in nonfinancial assets is also used for financial assets. For example, government loans to domestic units should be classified as acquisition of financial assets (3214,1) and their repayment by domestic units to government should be classified as disposal of financial assets (3214,2). Also, privatisation is a typical example of transactions in financial assets. Namely, sales of domestic public enterprise shares (privatisation) should be recorded as disposals of shares and other equity (3215,2) and purchase of some enterprise shares by government should be recorded as acquisitions of shares and other equity (3215,1).

Table 6: Transactions in Liabilities of Budgetary Central Government

Upon the creation of a financial claim of the creditor, the debtor, as the counterpart of the financial asset, simultaneously incurs a liability (33) of equal value. As well as transactions in financial assets, transactions in liabilities are defined as domestic (331) or foreign liabilities (332). The classification of liabilities is primarily based upon the degree of liquidity and legal characteristic of the instruments that describe the underlying creditor-debtor relationships: currency and deposits, securities other than shares, loans, shares and other equity (only of public corporations so they don't appear in the budget), insurance technical reserves, financial derivatives and other accounts receivable.

Transactions that increase the level of liabilities are referred to as **incurrence** of liabilities, while transactions that decrease the level of liabilities are referred to as **repayment**. As in the case of financial assets and due to transparency, the reports present gross repayments (denoted by number 1) and incurrence (denoted by number 2). For example, bonds issued by government in the foreign financial market are classified as foreign incurrence of securities other than shares (3323,2), and their redemptions should be recorded as repayment of securities other than shares (3323,1). Also, when the government borrows from domestic units, this transaction should be recorded as incurrence of loans (3314,2) and their redemption should be recorded as repayment of loans (3314,1). The only exception are repayments of short-term loans and the amortization of short-term securities performed within the same year that are, according to Article 77, point (3) of the Budget Accounting and Chart of Accounts Ordinance (Official Gazette Nos. 27/2005 and 127/2007), presented as net value, hence as a reduction in incurrence rather than as a repayment.

The result of net transactions in liabilities (33) and net transactions in financial assets (32) is defined as financing.

Table 7: Transactions in financial assets and liabilities, by sectors

Table 7 represents a summary of transactions in financial assets and liabilities by sector. Data for Budgetary Central Government, Extrabudgetary Users and Consolidated Central Government is published monthly, while data for Local Government and Consolidated General Government is published quarterly.

Table 8-8B

According to the GFS 2001 methodology, the Statement of Budgetary Central Government Operations details data on transactions in revenues (1), transactions in expenses (2), net transactions of nonfinancial assets (31), net transactions of financial assets (32) and net transactions of liabilities (33).

Operating balance is equal to revenue (1) minus expense (2).

Operating balance represents a measure of total cost of public goods and services. Positive operating balance increases net worth of the public sector indicating an excess of resources which are direct result of current operations and which can be used to acquire assets and/or to reduce liabilities. On the other hand, negative operating balance indicates a shortage of resources which is the result of current operations and, which reduces net worth and thus results as an increase in liabilities and/or sales of assets. Hence, operating balance is the indicator of sustainability of current government operations, but it is not necessarily an indicator of sustainability of future government operations. Value of operating balance is close to current deficit/surplus as defined according to GFS 1986.

Net operating balance equals revenue (1) minus expense (2). The gross operating balance equals revenue (1) minus expense (2) other than consumption of fixed capital (23). In Croatia, the gross and net operating balance is the same due to the lack of data on consumption of fixed capital.

Primary operating balance is equal to operating balance (revenue minus expense) augmented by interest expense and serves as an indicator of current fiscal policy considering that it does not include interest expense and hence excludes effects of past deficits and accumulated public debt from the balance.

Net lending/borrowing is equal to operating balance minus net acquisition of nonfinancial assets. Net lending/borrowing is also equal to net acquisition of financial assets minus net incurrence of liabilities or in other words, the amount of net lending/borrowing is financed with the difference between the net incurrence of liabilities and net acquisition of financial assets. This measure can serve as an indicator of financial effect of government operations to the rest of the economy: positive net lending/borrowing implies that the government is placing financial assets to domestic sectors or abroad, while negative net lending/borrowing implies an incurrence of liabilities from domestic sectors or abroad by the government.

Tables 9-16

According to Article 3 of the Budget Act (Official Gazette 87/2008), extrabudgetary users are extrabudgetary funds, enterprises and other legal entities in which the central or local government has decisive management control. **An extrabudgetary fund** is an extrabudgetary user; a legal entity created by law and financed by specific contributions and other revenues.

Croatian Pension Insurance Administration, Croatian Institute for Health Insurance, Croatian Employment Service and public enterprise Croatian Waters have been classified as extrabudgetary users since 1994. By the end of 2001 two more funds were created, namely Development and Employment Fund and the Regional Development Fund, which took over some of the Budgetary Central Government activities resulting in an expansion of the coverage of extrabudgetary users since the 1st of January 2002. As of the 1st of January 2003, these funds ceased being extrabudgetary funds and have been included in the coverage of the Budgetary Central Government as budgetary funds/users.

As of the 1st of July 2001, revenues from pension insurance contributions and expenses for pensions have been transferred from Croatian Pension Insurance Administration to Budgetary Central Government. The largest share of pension payments (domestic pensions) was paid directly through the State Treasury, while the remaining payments were performed through Croatian Pension Insurance Administration.

As of the 1st of January 2002, revenues from contributions and expenses for settlement of particular obligations of Croatian Institute for Health Insurance and Croatian Employment Service have been transferred to the Budgetary Central Government (through the State Treasury system). Currently, contributions for pension insurance amount to 20 percent of the salary (persons that participate in the second pillar of the pension insurance system pay 15 percent for the first pillar plus 5 percent for the second pillar). Contributions paid by employers include special contributions for the insurance against work injuries and professional diseases in the amount of 0.5 percent on salaries, health insurance contributions amounting 15 percent on salaries as well as employment contributions in the amount of 1.7 percent on salaries.

In April of 2001, two new state-owned legal entities were created, namely Croatian Motorways and Croatian Roads. These entities took over the functions of former Croatian Road Authority. Data on these entities as well as data on State Agency for Deposit Insurance and Bank Rehabilitation and Croatian Privatization Fund was presented in the reports of 2002 according to the requirements of the IMF methodology. Since 2003, they have become part of the official coverage of Consolidated Central Government, which is used in the process of budget creation.

Since the 1st of January 2004, the coverage of extrabudgetary funds also includes Fund for Environmental Protection and Energy Efficiency. Further, since the 1st of May 2004, payments of foreign pensions were performed directly through the State Treasury and no longer by transfer to Croatian Pension Insurance Administration.

As of the 1st of January 2007, all the transactions of Croatian Pension Insurance Administration, Croatian Institute for Health Insurance and Croatian Employment Service have been included in the Budgetary Central Government.

Croatian Privatization Fund (HFP) operated until 31st of March 2011. Since 1st April 2011, Agency for Management of the Public Property (AUDIO) operates, which has included HFP and a former Budgetary Central Government user - Central State Administrative Office for State Property Management.

As of the 1st October 2013 Restructuring and Sale Center (CERP) started operating. According to Article 25 of Management and Disposition of Property in Ownership of the Republic of Croatia Law (Official Gazette, number 94/2013), CERP is legal successor of all rights and obligations of abolished Agency for Management of the Public Property (AUDIO), made contracts and initiated court and other proceedings in which AUDIO was one of the parties. In addition to newly established CERP, AUDIO's business was also taken over by the State Property Management Administration.

Tables 9-16 detail data on revenue and expense according to the economic classification as well as transactions in nonfinancial assets, financial assets and liabilities for each extrabudgetary user.

With the budget 2008 revision (July 2008), in order to align with the European statistical methodology ESA 95, Croatian Motorways has been classified into the public non-financial corporations subsector and its transactions are not recorded within the general government sector any more. Regarding this, the data for the year 2008 have been recalculated and presented in that way as of No 154. The said change, besides the changes in the extrabudgetary users' tables, implies also the recalculation in the tables 3, 8, 17, 18, 18A, 18B, 20 and 21.

Table 17: Consolidated Central Government by Economic Category

The Consolidated Central Government according to GFS 2001 methodology is equivalent to the Consolidated Central Government Budget as defined by the Budget Act (Consolidated State Budget and financial plans of extrabudgetary users).

The Consolidated Central Government Budget results from the consolidation of financial transactions between the State Budget and extrabudgetary users, as well as between the extrabudgetary users themselves.

Table 17 presents the Consolidated Central Government's revenue and expense as well as the transactions in nonfinancial assets, financial assets and liabilities according to the economic classification.

Table 18: Consolidated Central Government According to Government Level

Table 18 gives summary of revenue, expense, transactions in nonfinancial assets, financial assets and liabilities for each of the component of the Consolidated Central Government, namely the Budgetary Central Government and extrabudgetary users (disaggregated).

Table 18A-18B

Operating balance is equal to revenue (1) minus expense (2).

Operating balance represents a measure of total cost of public goods and services. Positive operating balance increases net worth of the public sector indicating an excess of resources which are direct result of current operations and which can be used to acquire assets and/or to reduce liabilities. On the other hand, negative operating balance indicates a shortage of resources which is the result of current operations and, which reduces net worth and thus results as an increase in liabilities and/or sales of assets. Hence, operating balance is the indicator of sustainability of current government operations, but it is not necessarily an indicator of sustainability of future government operations. Value of operating balance is close to current deficit/surplus as defined according to GFS 1986. **Net operating balance** equals revenue (1) minus expense (2). The **gross operating balance** equals revenue (1) minus expense (2) other than consumption of fixed capital (23). In Croatia, the gross and net operating balance is the same due to the lack of data on consumption of fixed capital.

Primary operating balance is equal to operating balance (revenue minus expense) augmented by interest expense and serves as an indicator of current fiscal policy considering that it does not include interest expense and hence excludes effects of past deficits and accumulated public debt from the balance.

Net lending/borrowing is equal to operating balance minus net acquisition of nonfinancial assets. Net lending/borrowing is also equal to net acquisition of financial assets minus net incurrence of liabilities or in other words, the amount of net lending/borrowing is financed with the difference between the net incurrence of liabilities and net acquisition of financial assets. This measure can serve as an indicator of financial effect of government operations to the rest of the economy: positive net lending/borrowing implies that the government is placing financial assets to domestic sectors or abroad, while negative net lending/borrowing implies an incurrence of liabilities from domestic sectors or abroad by the government.

Table 19: Local Government Transactions (the largest 53 units)

Table 19 details data on revenue and expense of local governments (53 largest units that include counties, the City of Zagreb and other 32 cities, which make up 70 to 80 percent of total transactions and which are in this sense observed since 2001) according to economic category as well as data on transactions in nonfinancial assets, financial assets and liabilities. Table 19 is published quarterly according to financial reports of the Financial Agency (FINA).

According to the Law on Financing of Local Governments (Official Gazette 117/93, 69/97, 33/00, 127/00, 59/01, 107/01, 117/01, 150/02, 147/03, 132/06, 26/07 and 73/08) local governments acquire revenue from own sources, through mutual taxes and through grants from state and county budgets.

Counties own sources of revenues are as follow: income from own assets, county taxes (inheritance and gift tax, motor vehicle tax, seafaring and freshwater vessel tax, gaming machine tax), monetary fines, confiscated assets and other revenue as stipulated by special legislation.

The own sources of revenues of municipalities and cities are: income from own assets, municipal taxes (consumption tax, vacation houses tax, public land use tax, tax on company name), monetary fines, administrative fees, residence fees, utility charges, charges for the use of public municipal or urban land and other revenue as stipulated by special legislation. Beside this, cities and municipalities can impose surtax to income tax as an additional revenue source (up to 10 percent in municipalities, up to 12 percent in cities below 30,000 inhabitants, up to 15 percent in cities with the population above 30,000 and up to 30 percent in the City of Zagreb).

Mutual taxes of Budgetary Central Government and local and regional self-government units are: property sales tax (the share of municipalities and cities is 60 percent and that of the Budgetary Central Government 40 percent), personal income tax (municipalities and cities receive 55 percent increased by share of decentralised functions, counties 15.5 percent also increased by share of decentralised functions, the share of grants for adjustment for decentralized functions is 17.5 percent and the share for decentralised functions is 12 percent. The City of Zagreb receives 70.5 percent of personal income tax increased by share for decentralised functions. For those municipalities and cities on islands that reach an agreement on mutual financing of a capital project concerning island development, the share of personal income tax increases by 17.5 percent. Municipalities and cities located in the Areas of Special State Concern or in the Mountain Areas, the share of personal income tax amount to 90 percent.

The part of personal income tax revenue which is allotted from Budgetary Central Government to local governments on the basis of decentralized functions is treated as grant from other general government units according to GFS 2001 methodology.

Table 20 Consolidated General Government by Economic Category

Table 20 details data by economic category on revenue and expense as well as data on transactions in nonfinancial assets, financial assets and liabilities of the Consolidated General Government and it is published quarterly.

In terms of the Budget Act, the **Consolidated Budget of Republic of Croatia** represents the Consolidated Central Government and Consolidated Local Governments Budget. In terms of the GFS 2001 methodology it relates to Consolidated General Government.

The Consolidated General Government is the result of the consolidation of transactions on all government levels and among them – Budgetary Central Government, Extrabudgetary Users and Local Government Budgets (the largest 53 units).

Table 21: Consolidated General Government by government level

Table 21 details data on aggregate amounts of revenue, expense, transactions in nonfinancial and financial assets as well as transactions in liabilities for each component of the Consolidated General Government: Budgetary Central Government, Extrabudgetary Users and Local Government Budgets (the largest 53 units). It is published quarterly and for further methodology notes see explanation for table 20.

Table 22: General Government debt stock

Due to the change in the debt computation methodology and change in publication system, data on General Government debt stock will no longer be available in Monthly Statistical Review of the Ministry of Finance. Data will be published in the Croatian National Bank Bulletin.

Starting with Bulletin No. 196 of Croatian National Bank, Table13 shows general government debt, which consists of central government debt, local government debt and social security funds debt. Starting with Bulletin No. 196, the methodology used was aligned with the European system of national and regional accounts (hereinafter: ESA95) and Eurostat Manual on Government Deficit and Debt. Table 13 shows general government sector debt stock in kuna. As from 31 December 2010, an official sector classification of institutional units in the Republic of Croatia is used, in accordance with the Decision on the statistical classification of institutional sectors issued by the Central Bureau of Statistics, which is based on ESA95 methodology which divides the general government into the following subsectors: central government, social security funds and local government.

Table 23: Consolidated Central Government Domestic Debt

Frozen Foreign Exchange Deposits – at the end of 1991 and based on a directive of the Croatian Government (Official Gazette, Nos. 71/91, 3/92, 12/92, 71/92, 103/93), the foreign exchange deposits of citizens in banks operating in the Republic of Croatia as of the 27th of April 1991 were converted into public debt of the Republic of Croatia. The deposits were augmented by the corresponding interest rate payments in 1991. The claims amounting DEM 5.034 billion were substituted by bonds of the Republic of Croatia repaid in twenty semi-annual instalments beginning as of 30th of June 1995.

Big Bonds were issued in 1991 with a DEM 1,550.09 million nominal value. In 1996 Big Bonds were split into Big Bonds I, Big Bonds II (Riječka banka and Splitska banka), Big Bonds III (Privredna banka) and Big Bonds IV (Privredna banka). Big Bonds IV (Privredna Banka) were redeemed in 2000. In April 2000, the Government replaced the old Big Bonds I, which were not paying interest, with new bonds for economic restructuring (Big Bonds I). The new Big Bonds I mature in 2011 and pay an annual interest rate of 5 percent.

Reconstruction Bonds were issued in 1992 and 1993 (Official Gazette, No. 65/91) in order to collect funds to finance the reconstruction of war-damaged commercial, religious and cultural heritage structures. There were 3 bond issues: the first issue had a value of DEM 50 million and USD 30 million, the second issue was worth CAD 10 million, while the third issue had a value of AUD 25 million.

Bonds – Series D are issued through a syndicate of domestic banks in order to foster the development of domestic capital markets. Bonds Series 01 D-04 were issued in 2001 with a EUR 200 million nominal value, maturing in three years with an annual interest rate of 6.5 percent (Official Gazette, No. 80/2001). Bonds Series 02-D8 were issued in 2001 with a EUR 200 million nominal value, for a seven-year period and 6.875 percent annual interest rate (Official Gazette, No. 112/2001). Bonds Series 03 D-12 were issued in three tranches. The first two issues took place in 2002 with a EUR 300 million nominal value. The third issue took place in January 2003 with a EUR 200 million nominal value. These bonds mature in 2012 and pay an annual interest rate of 6.875 percent (Official Gazette, No. 58/2002, No. 111/2002, No. 14/2003).

BRA Bonds: BRA Bonds I were issued for the rehabilitation of Riječka banka (HRK 552 million, Official Gazette Nos. 31/96, 20/98) and Splitska banka (HRK 765 million, Official Gazette Nos. 31/96, 22/98). Bonds for the rehabilitation of Privredna banka were issued in the amount of HRK 1,463 million. There were 3 bond issues (Official Gazette, No. 106/98): BRA Bonds II (PBZ-DEM) were issued in the amount of DEM 84,333.6 million or equivalently HRK 300 million for a 15-year period. BRA Bonds III (PBZ-HRK) were issued in the amount of HRK 744 million for a 15-year period. BRA Bonds IV (PBZ-HRK) were issued in the amount of HRK 419.7 million for a 15-year period. BRA Bonds V were issued during 1998 for the rehabilitation of Dubrovačka banka in an amount of HRK 1,001.5 million for a 10-year period ("Official Gazette", No. 56/98). During 1998, as part of the rehabilitation process of Dubrovačka banka, a large portion of this bonds were redeemed. At the beginning of 1999, a new decision on the rehabilitation and reconstruction of Dubrovačka banka was enacted (Official Gazette, No. 11/99). The new decision prompted the issue of bonds in the amount of HRK 2,601.8 million, consisting of HRK 1,001.5 million in compliance with the former decision plus the new HRK 1,415.3 million for coverage of potential losses and additional HRK 185 million as recapitalisation of the bank. BRA Bonds V-A were issued as a substitute for the unredeemed portion of the BRA Bonds V, whereas BRA bonds V-B covered the remaining part (HRK 1,600.3 million) according the new decision.

Treasury Bills are short-term securities issued by the Ministry of Finance. The issue price is set at regular auctions, while the planned issue is announced by the Ministry of Finance with the bid invitation. Treasury bills are issued with the maturity of 91, 182, 364 and 728 days.

Deposit Insurance Scheme BRA Bonds are issued by the State Agency for Deposit Insurance and Bank Rehabilitation and are guaranteed by the Government. They are issued in order to foster the development of domestic capital markets and as means of payment for the insured deposits of bankrupted banks. Deposit Insurance Scheme BRA Bonds I were issued in 2000 with a EUR 105 million nominal value, an annual interest rate of 8percent and with a maturity of 3 years. Deposit Insurance Scheme BRA Bonds II were issued in 2000 with a EUR 225 million nominal value, 2005 maturity and 8.375percent annual interest rate.

Health Institute Bonds were issued by the Croatian Health Insurance Institute and were guaranteed by the Government with the purpose to foster the development of the domestic capital market and to help the restructuring of the health insurance system. These Bonds were issued in 2000 with a nominal value of EUR 222 million and 8.5percent annual interest rate with the maturity in 2004.

Table 24: Results of the Treasury Bills' auctions held by the Ministry of Finance

Treasury Bills are short-term securities issued by the Ministry of Finance. The issue price is set at regular auctions, while the planned issue is announced by the Ministry of Finance with the bid invitation. Treasury bills are issued with maturity of 91, 182, 364 and 728 days.

Table 24 details the results of the treasury bills' auctions held by the Ministry of Finance, classified by the date of auction and including the following: size, total bids received, weighted average of the bids received (HRK)/yielding (percent), uniform price allocation per 100 HRK/yielding (percent).

Note:

All diagrams shown in text about fiscal sector refer to Budgetary Central Government.

The GFS 2001 Manual is published on the IMF web site under the following address:

<http://www.imf.org/external/pubs/ft/gfs/manual/comp.htm>

MANAGEMENT OF THE MINISTRY OF FINANCE



ADVANCE RELEASE CALENDAR

Ministry of Finance Monthly Statistical Review	Notes	Release			
		December 14	January 15	March 15	April 15
Number		229	230	231	232
SDDS Data Category		December 14	January 15	March 15	April 15
General Government operations	1)			(12/14)	
Central Government operations	2)	(10/14)	(11/14)	(12/14)	(1/15)
Internal Central Government Debt	3)	(10/14)	(11/14)	(12/14)	(1/15)

1) Consolidated central government, extrabudgetary users and local government according to GFS 2001

2) Consolidated central government and extrabudgetary users according to GFS 2001

3) Stock of central government domestic debt

ISSN 1334-4013